



MIXR

CATALOGUE - EQUIPMENT
AND SPECIFICATIONS



MiXR CATALOGUE

THIS CATALOGUE CONTAINS PRESENTATIONS AND SPECIFICATIONS OF MODEL, HARDWARE AND SOFTWARE

VIRTUAL PRODUCTION

- 03 | LED WALL
- 05 | DISPLAY CONTROLLER
- 06 | PC

VIRTUAL REALITY

- 07 | VIVE PRO 2
- 09 | VARJO AERO

AUGMENTED REALITY

- 11 | HOLOLENS 2

MOTION CAPTION

- 13 | ROKOKO SMARTSUITE PRO II

3D SCANNING

- 15 | MATTERPORT PRO2

DEVICES

- 17 | RAZOR BLADE PRO
- 20 | IPAD PRO
- 21 | IPHONE SE
- 22 | SCREENS

MADE FOR MiXR'S TECHNOLOGY | 2022
LAYOUT | RIKKE HEDEGAARD THOMSEN

BORROWED TEXT | CREDIT TO
DESIGN | CLARA STENFELDT

LED WALL



INFO

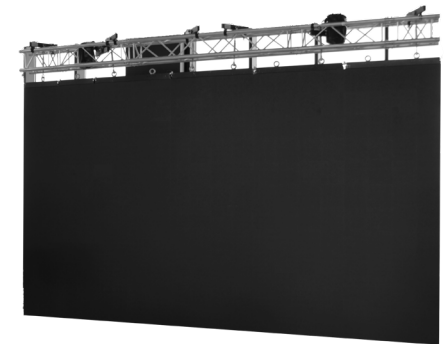
FOR VIRTUAL PRODUCTIONS
3 x 5 m led wall

DISPLAY

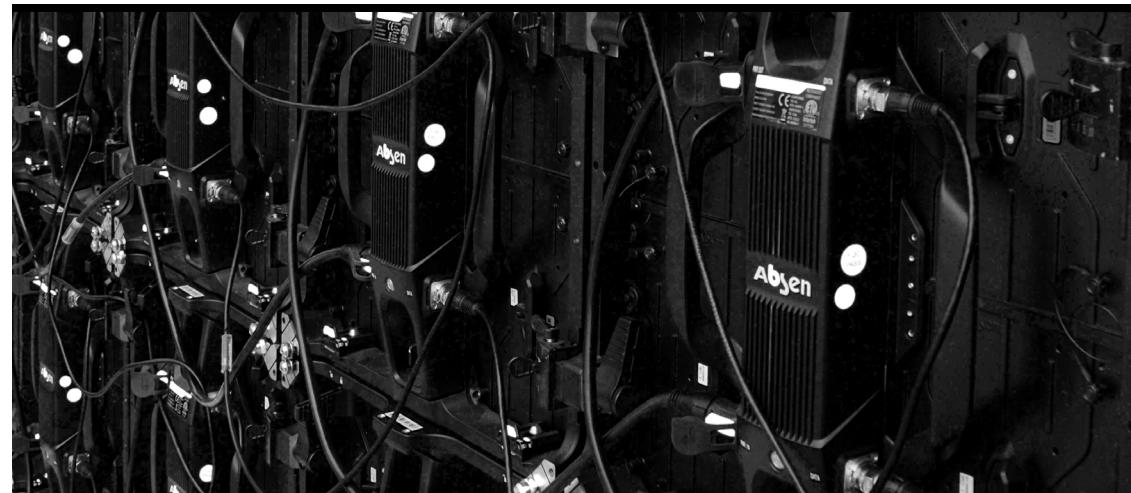
LED wall 15 sqm – L 5 m, H 3m
Pixel pitch 2,5 meters
Room Measurements:
L 10,7 m, B 7,4 m, H 5,8 m
(LED wall takes apx. 2 m of the lenght)

WORKS WITH

Video processor: Novastar (MCTRL4K)
Possible to use with or without cameratracking.
It is possible to borrow Antilatency floor tracking solution or
HTC VIVE MARS CAMTRACKER

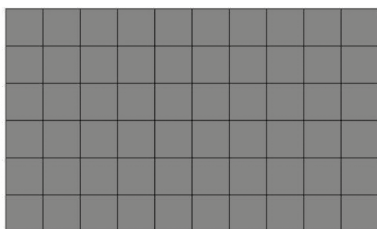


For more reading go to: <https://www.absen-europe.com/virtual-studio/>





Screen Configuration



Single Panel Information

Product Model	PL2.5 Pro	Dimensions (w x h x d) (mm)	500x500x87
Resolution (w x h)	200x200	# of modules	4
Weight (kg/per pcs)	9.6	Cabinet Material	Die Casting Aluminum

Display Information

Display	Width	Height	Total
# of panels(pcs)	10	6	60
Display area (m)	5.000	3.000	15.000
Display Resolution(px)	2000	1200	2400000

Other Spec

Aspect Ratio (W:H)	1.667 : 1	Diagonal	5.83 m
Weight(Kg/Lbs)	576.00	Heat load(BTU/HR)	27637.200
Max # of data cascading	14	# of data ports required	5
Max # of power cascading	3pcs per outlet@220V/16A	# of AC outlets required	20 @220V/16A outlet
Avg Power/W	2700	Max Power/W	8100
Sending box model	MCTRL4K	# of sending box	1

*Note: Information listed here for reference and estimation only. For data, power requirement and the sending box, etc., please contact Absen for confirmation and more details.

Absen GmbH
Hessenring 4c, 64546 Mörfelden-Walldorf
Tel: +49 (0) 6142 78935-0
Email: europe@absen.com

DISPLAY CONTROLLER



INFO

FOR VIRTUAL PRODUCTION
NOVAMCTRL4K led wall display controller

FEATURES

Complete video input interfaces: DP1.2 x 1, HDMI2.0 x 1, dual-link DVI x 2
Supports 16-channel Neutrik gigabit ethernet outputs and 4-optical ports
Supports two operating modes during dual-link DVI input: mosaic and multi-card
Screen configuration can be done at any time without PC
Manual adjustment of screen brightness
Multiple controllers are able to be cascaded for uniform control

INPUTS

DP 1.2 interface, with a maximum resolution of 4096x2160@60Hz and minimum resolution of 640x480@24Hz
HDMI 2.0 interface, with a maximum resolution of 4096x2160@60Hz and minimum resolution of 800x600@30Hz
DUAL DVI-D1/D2 interface, each with a maximum resolution of 3840x1080@60Hz and minimum resolution of 800x600@30Hz

Outputs

1-16
16 Neutrik (NE8FBH) Gigabit Ethernet ports
Maximum loading capacity of a single Ethernet port:
For 8-bit input sources: 650,000 pixels
For 10-bit/12-bit input sources: 320,000 pixels

PC

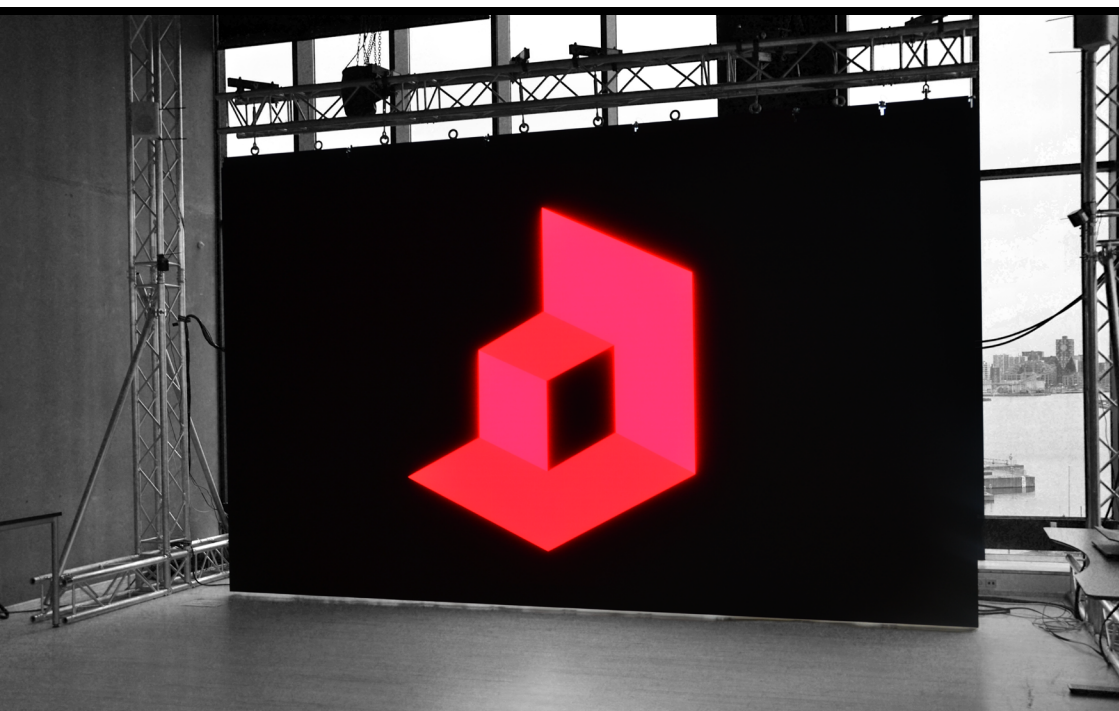


INFO

FOR VIRTUAL PRODUCTION
Screen & desk

WORKSTATION

HP Z2 TWR G9 – 700W Workstation
Intel Core i9-12900K, 128GB (4x32GB) DDR5 4800 UDIMM ECC Mem, 2TB PCIe 4x4 2280 Turbo M.2 SSD, NVIDIA RTX A5000 24 GB DH Blower Fan 4DP PCIe x16 Graphics, HP USB Mus & Keyboard, Pro 64 High End
HP Z Turbo 2TB PCIe-4x4 2280 TLC M.2 2nd SSD
And Blackmagic Decklink Pro 8K PCIe



VIVE PRO 2



INFO

FOR VIRTUAL REALITY
4 x Vive Pro headset in 5K



VIVE PRO 2 HEADSET

Basestation 2.0
Controller (L) + (R)
All-in-one cable
Cleaning cloth
Earphone hole cap x 2
Link box (2.0)
USB 3.0 cable
DisplayPort cable
Mini DP to DP Adapter
Link box power adapter
Controller (2018) w. lanyard
Micro-USB cable x 2
Power adapter x 2
Base station 2.0 x 2
Base station power adapter
Mounting kit
Documentation (QSG / Safety Guide / Warranty / IPD Guide / Wall Mount Installation Guide / VIVE Logo Sticker

BRIEF HIGHLIGHTS

1. Immerse yourself in next-gen visuals with industry-leading 5K resolution, wide 120° field of view, and an ultra-smooth 120Hz refresh rate.
2. Feel fully immersed with the equipped Hi-Res Certified headphones.
3. Experience best in class tracking performance and comfort.

SCREEN

Dual RGB low persistence LCD. Resolution: 2448 x 2448 pixels per eye (4896 x 2448 pixels combined)
Refresh Rate: 90/120 Hz (only 90Hz supported via VIVE Wireless Adapter)
Field of view: Up to 120°

AUDIO

Hi-Res certified headset (via USB-C analog signal)
Hi-Res certified headphones (removable)
High impedance headphones support (via USB-C analog signal)

INPUTS

Integrated dual microphones
Connections
Bluetooth, USB-C port for peripherals

SENSORS

G-sensor, gyroscope, proximity, IPD sensor, SteamVR Tracking V2.0 (compatible with SteamVR 1.0 and 2.0 base stations)

ERGONOMICS

Eye relief with lens distance adjustment
 Adjustable IPD 57-70mm, headphones and head strap
 Controller Specs
 Sensors
 SteamVR Tracking 2.0
 Input
 Multifunction trackpad
 Grip buttons
 dual-stage trigger
 System button, Menu button
 Use per charge - Approx. 6 hours
 Connections
 Micro-USB charging port
 Tracked Area Requirements
 Standing/seated
 No min. space requirements
 Room-scale: Up to 10m x 10m using four SteamVR Base Station 2.0.
 The included two base stations support up to 5m x 5m.

MINIMUM COMPUTER SPECS

Processor: Intel Core i5-4590 or AMD Ryzen 1500 equivalent or greater
 Graphics: NVIDIA GeForce GTX 1060 or AMD Radeon RX 480 equivalent or greater.
 *GeForce RTX 20 Series (Turing) or AMD Radeon 5000 (Navi)
 Memory: 8 GB RAM or more
 Video out: DisplayPort 1.2 or higher
 *DisplayPort 1.4 or higher with DSC is required for Full Resolution mode.
 USB ports: 1x USB 3.0 or newer
 Operating system: Windows 11 / Windows 10

VARJO AERO**INFO**

| FOR VIRTUAL REALITY

1 x Varjo Aero headset (very high quality)

DISPLAYS

Dual Mini LED LCD; 2880 x 2720 px per eye
 Brightness: Calibrated to 150 NIT
 Colors: Calibrated with coverage of
 99% sRGB, 95% DCI-P3
 Refresh rate: 90 Hz

**OPTICS**

Custom-made variable resolution aspheric lenses with 35 PPD peak fidelity
 Edge-to-edge clarity; no reflections, no ghost rays

FIELD OF VIEW

Horizontal: 115° | Diagonal: 134° at 12 mm eye relief

INTERPUPILLARY DISTANCE (IPD)

Automatic IPD adjustment with motor
 Supported IPD range: 57–73 mm

AUDIO

3.5 mm audio jack
 In-ear headphones with mic in-box

WEIGHT

487 g + headband 230 g (including counterweight)

DIMENSIONS

Width 200 mm, height 170 mm, length 300 mm

CONNECTIVITY

Headset adapter and USB-C cable (5-metre) in-box

PC connections: DisplayPort and USB-A 3.0

POSITIONAL TRACKING

SteamVR 2.0/1.0

EYE TRACKING

200 Hz with sub-degree accuracy; 1-dot calibration for foveated rendering

COMFORT & WEARABILITY

3-point precision fit headband

Replaceable, easy-to-clean polyurethane face cushions

Active cooling

PROCESSOR

4-core CPU

For example; Intel Core i5-4590,

Intel Xeon E5-1620, AMD Ryzen 5 1500X

equivalent or better

COMPONENT

Memory 8 GB

Storage space 2 GB

Video output 1 x DisplayPort 1.4

USB connectivity 1 x USB-A 3.0 / 3.1

Operating system Windows 10 (64-bit), Windows 11 (64-bit)

HOLOLENS 2



INFO

FOR AUGMENTED REALITY

2 x HoloLens 2 smart glasses headset

DISPLAY

Optics: See-through holographic lenses (waveguides)

Resolution: 2k 3:2 light engines

Holographic density: >2.5k radiants (light points per radian)

Eye-based rendering: Display optimization for 3D eye position

SENSORS

Head tracking: 4 visible light cameras

Eye tracking: 2 IR cameras

Depth: 1-MP Time-of-Flight depth sensor

IMU: Accelerometer, gyroscope, magnetometer

Camera: 8-MP stills, 1080p30 video

AUDIO AND SPEECH

Microphone array: 5 channels

Speakers: Built-in spatial sound

HUMAN UNDERSTANDING

Hand tracking: Two-handed fully articulated model

Eye tracking: Real-time tracking

Voice: Command and control on-device; natural language with internet connectivity

Windows Hello: Enterprise-grade security with iris recognition



ENVIRONMENT UNDERSTANDING

6DoF tracking: World-scale positional tracking
 Spatial Mapping: Real-time environment mesh
 Mixed Reality: Capture Mixed hologram and physical environment photos and videos

COMPUTE AND CONNECTIVITY

SoC: Qualcomm Snapdragon 850 Compute Platform
 HPU: Second-generation custom-built holographic processing unit
 Memory: 4-GB LPDDR4x system DRAM
 Storage :64-GB UFS 2.1
 WiFi: 802.11ac 2x2
 Bluetooth 5.0
 USB Type-C

FIT

Single size
 Fits over glasses
 Weight 566g

SOFTWARE

Windows Holographic Operating System
 Microsoft Edge
 Dynamics 365 Remote Assist & Guides
 3D Viewer

POWER

Battery life: 2–3 hours of active use
 Charging: USB-PD for fast charging

ROKOKO SMARTSUITE PRO II**INFO****FOR MOTION CAPTURE**

3 x Motion Capture suits small, medium and large
 1 x Motion Capture gloves + headband

TEXTILE

The textiles are a unisex design
 They are made of a high performance and very durable, nylon based fabric.
 Adjustable tightening straps to make it fit all body types.
 Seamlessly integrated tunnels to protect all electronics parts.
 With YKK zippers.
 Empower movements, yet very comfortable

SENSORS

9-DoF IMU motion sensors connected to a hub,
 pre-installed in a textile suit
 3D orientation accuracy: ± 1 deg

HUB

The hub is placed on the back of the suit and its main job is to collect all the tracking data from the sensors, fusion it and live stream it to Rokoko Studio over WiFi.

BATTERY & POWER

The suit is powered by an external power bank, see our recommendations here, you connect the suit via the USB power cables included in the box.



CONNECTIVITY (WIFI)

2,4 & 5 Ghz - 802.11ac Wi Fi wireless networking

Frame rate: 200fps

Latency: approx. 15 ms latency on a standard WiFi router

Range: Up to 100 m

IN THE BOX

Up to 19 x Sensors

A Smartsuit Pro II textile with pre-installed motion sensors connected to a hub.

A power cable.

One waterproof suit cover.

SOFTWARE & PLUGINS

Rokoko Studio: an easy-to-use live motion capture recording software.

Plugin integrations for real-time data streaming are available:

UNREAL	HOUDINI	UNITY	CATOON ANIMATOR 4
BLENDER	ICLONE 7	MAYA	
MOBU	SIEMENS JACK	CINEMA 4D	MOTION- BUILDER

MAINTENANCE

The electronic parts can easily be removed from the Smartsuit Pro II, so you can wash the textile in a machine.



DOWNLOAD ROKOKO STUDIO LEGACY

<https://www.rokoko.com/studio/download>

MATTERPORT PRO2**INFO**

FOR 3D SCANNING

Matterport camera in 4k

3D SENSING

Structured light (infrared) 3D sensor

20 seconds capture time per scan/sweep

99% accurate within range

15 ft (4.5 m) maximum range

3D Data Registration: Automatic

Depth Resolution: 10 points per degree

CONSTRUCTION

Durable texture black plastic enclosure

Manufactured in USA

Size: 9.0" H, 10.25" W, 4.38" D

(230 x 260 x 110 mm)

Weight: 7.5 lb (3.4 kg)

Color: Black

**PHOTOGRAPHY**

Output Pano Pixels: 134.2 MP, equirectangular

Export images up to 8092px x 4552px

Lens: 4K Full Glass

White Balancing: Automatic full-model

360° (left-right) x 300° (vertical) field of view

DATA

WiFi to transfer data from camera to iOS device through the Capture app

WiFi 802.11 n/ac 5 Ghz

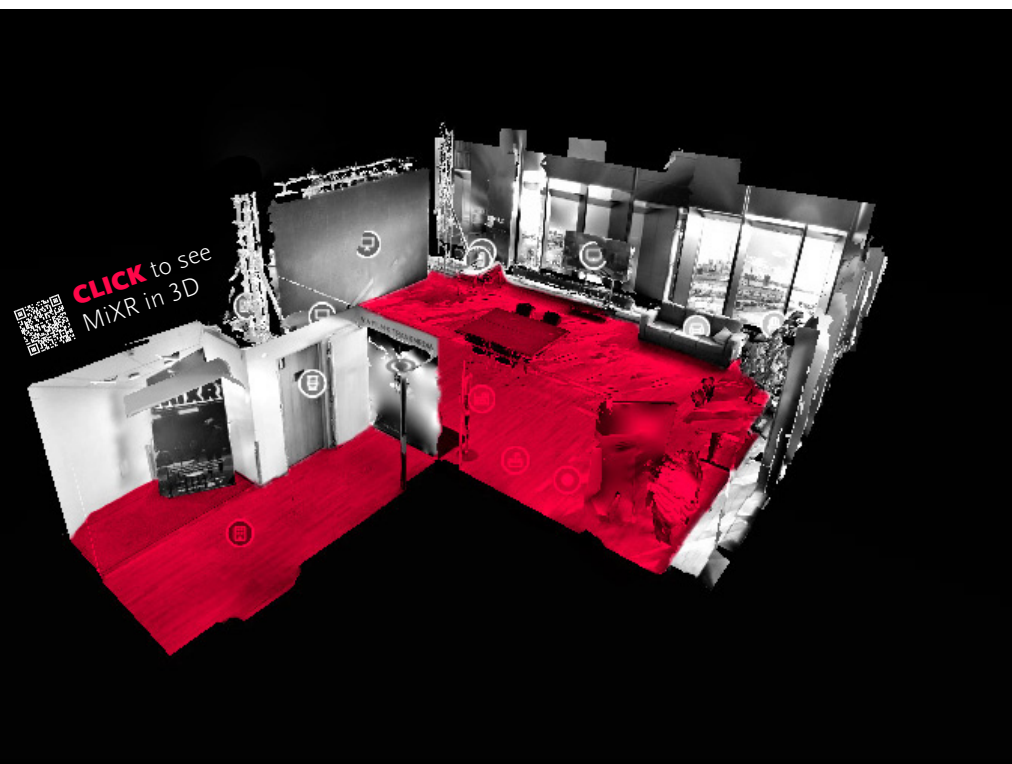
Includes a GPS

BATTERY

Lithium ion battery

Can scan for 8 hours on one charge

4.5 hour charge time



RAZOR BLADE PRO



INFO

FOR VR, MoCap & 3D

4 x Razor Blade Pro laptops 17" (2021)

SYSTEM

Windows 10 Home 64-bit Edition

Theft/Intrusion Protection

PROCESSOR

Manufacturer: Intel

CPU-Type: Core i9

Processor generation: 11

Processor number.: I9-11900H

Clock-frequency: 2.5 GHz

Max Turbo Speed: 4.9 GHz

Number of Cores: 8 Cores

Functions: Intel Turbo Boost Technology

RAM

Installed memory: 32 GB

Technology: DDR4 SDRAM

Memory frequency: 3,200 MHz

HARD DISC

Type: SSD

Storage Capacity (built in): 1000 GB

Interface: PCIe

Hard disc-qualities: NVM Express (NVMe)



CARD READER

Type: Card reader

Supported flash memory: SDXC UHS-III Memory Card

DISPLAY

Diagonal size (metric): 43.9 cm

Screen type: LED

Screen size: 17.3 "

Widescreen: Yes

Resolution: 3840 x 2160

Image clarity: 300 cd/mm

Update frequency: 120 Hz

Monitor Features: 100% sRGB color spectrum, 6 mm edge

Factory Calibration

VIDEO OUTPUT

Discrete graphics processor: Yes

Graphics processor: NVIDIA GeForce RTX 3080

Graphics processor-serie: NVIDIA GeForce RTX

Technology: GDDR6 SDRAM

Digital Camera: Possible to use as webcam?

Resolution: 720p

Sound output Type: Stereo speakers

Audio Input Type: Array-microphone

Input equipment Type: Keyboard, Touchpad

Backlight: Yes (RGB)

Features: Anti-ghosting, Glass touchpad, Per key RGB,

Precision touchpad, Razer Chroma RGB, Razer Synapse 3 enabled

NETWORK

Data connection protocol: 2.5 Gigabit Ethernet, Bluetooth 5.2, Ethernet, Fast Ethernet, Gigabit Ethernet, IEEE 802.11a, IEEE 802.11ac, IEEE 802.11ax (Wi-Fi 6), IEEE 802.11b, IEEE 802.11g, IEEE 802.11n

Wireless protocol: 802.11a/b/g/n/ac/ax, Bluetooth 5.2

Wired protocol: 2.5 Gigabit Ethernet

Wireless NIC: Intel Wi-Fi 6E AX 210

Mobile broadband

Holders

M.2 (PCI Express / SATA) (1 free)

Battery

Cells: 2 cells

Battery capacity: 70.5 W·h

Power unit: 230 W

INTERFACER

3 x USB 3.2 Gen 2, HDMI, Combo jack for headphone/microphone, LAN, USB-C (supports Thunderbolt 3), USB-C 3.2 Gen 2

USB-C functions

USB Power Delivery

2 USB-C ports

3 USB ports

1 HDMI-ports

MEASURE AND WEIGHT

Width: 39.5 cm

Depth: 26 cm

Height: 1.99 cm

Weight from: 2.75 kg

IPAD PRO



INFO

FOR MIXED REALITY & 3D SCAN

4 x Apple tablets 12,9" (2021) for MR & 3D (apps)

SCREEN

Liquid Retina XDR screen footnote2

Liquid Retina display footnote2

ProMotion technology

INSIGHT

Apple softwear

M1 chip

12 MP wide-angle and 10 MP
ultra-wide-angle cameras on the back

TrueDepth camera on the front with In focus function

USB-C connector which supports

Thunderbolt/USB 4

5G mobile connectivity3

WORKS WITH

Apple Pencil (2nd generation)

Magic Keyboard

Smart Keyboard Folio

APPS

E.g. Polycam, Matterport, Rokoko Remote & Face Capture, Live Link etc



IPHONE SE



INFO

FOR MIXED REALITY & 3D SCAN

4 x Smartphones 4,7" (2018) for MR & 3D (apps)

SCREEN

Retina HD display

4.7-inch (diagonal) widescreen LCD

Multi-Touch display with IPS technology

1334-by-750-pixel resolution at 326 ppi

1400:1 contrast ratio (typical)

True Tone display

Wide color display (P3)

Haptic Touch

625 nits max brightness (typical)

Fingerprint-resistant oleophobic coating

Display Zoom

Reachability

INSIGHT

Apple softwear

A15 Bionic chip

6-core CPU with 2 performance and 4 efficiency cores

4-core GPU

16-core Neural Engine



APPS

E.g. Polycam, Matterport, Rokoko Remote & Face Capture, Live Link etc.



SCREENS



INFO

| FOR PRESENTATIONS

Screens for displaying

CLEVERTOUCH 86"

UX Pro 2 Gen 2
Touchscreen in 4 K
2 x USB-C ports
Infinity whiteboarding
Screen mirroring
On clouds like Google
Workspace & OneDrive



SONY 75"

BRAVIA FW-75BZ40H
LED Monitor
Smarttv in 4K
4x HDMI, 2x USB inputs/ports
Ultra HD / HDR professional displayer
Built-in cromecast, Apple Airplay and
wireless LAN



TECHNOLOGY LEAD | THOMAS ERLAND PEDERSEN
CONTACT | THO@VIA.DK | +45 8755 1271 | MiXR LAB
FILMBYEN 4 | 6TH FLOOR LEFT | 8000 AARHUS C | DK