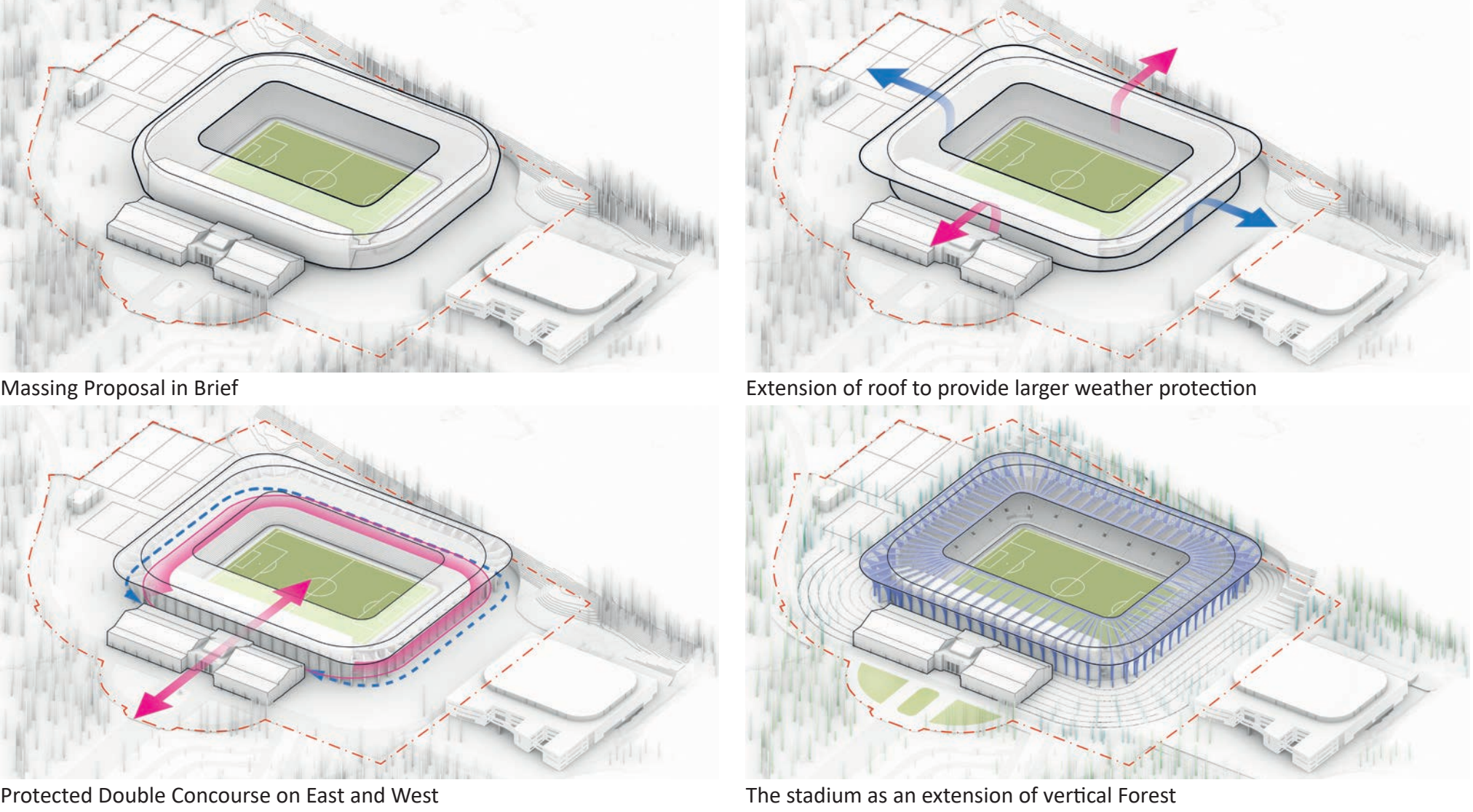


SKOVENS ARENA

NEW STADIUM IN AARHUS

ARRIVAL FROM STADION ALLÉ

GENERATIVE DIAGRAM

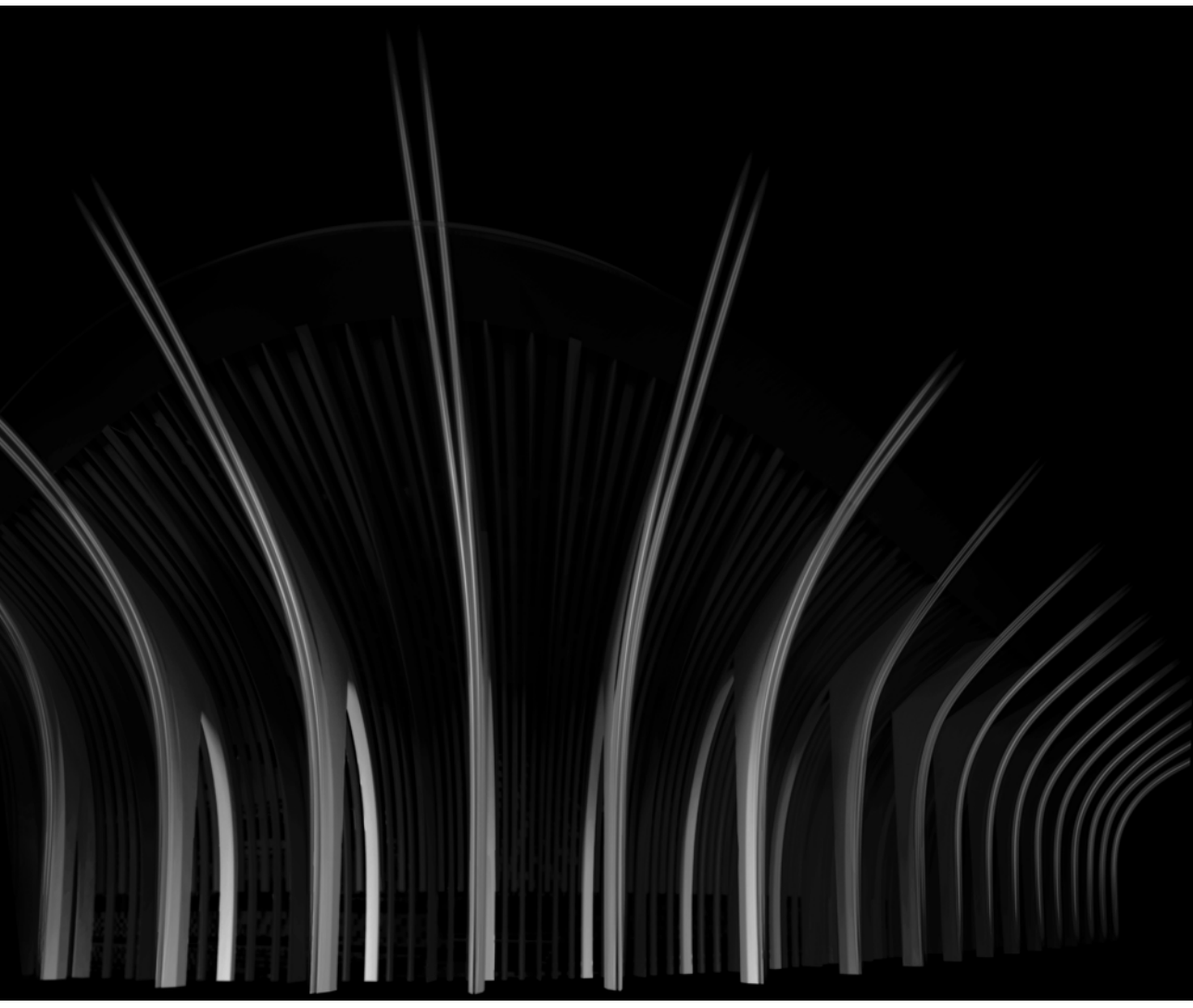


INSPIRATION

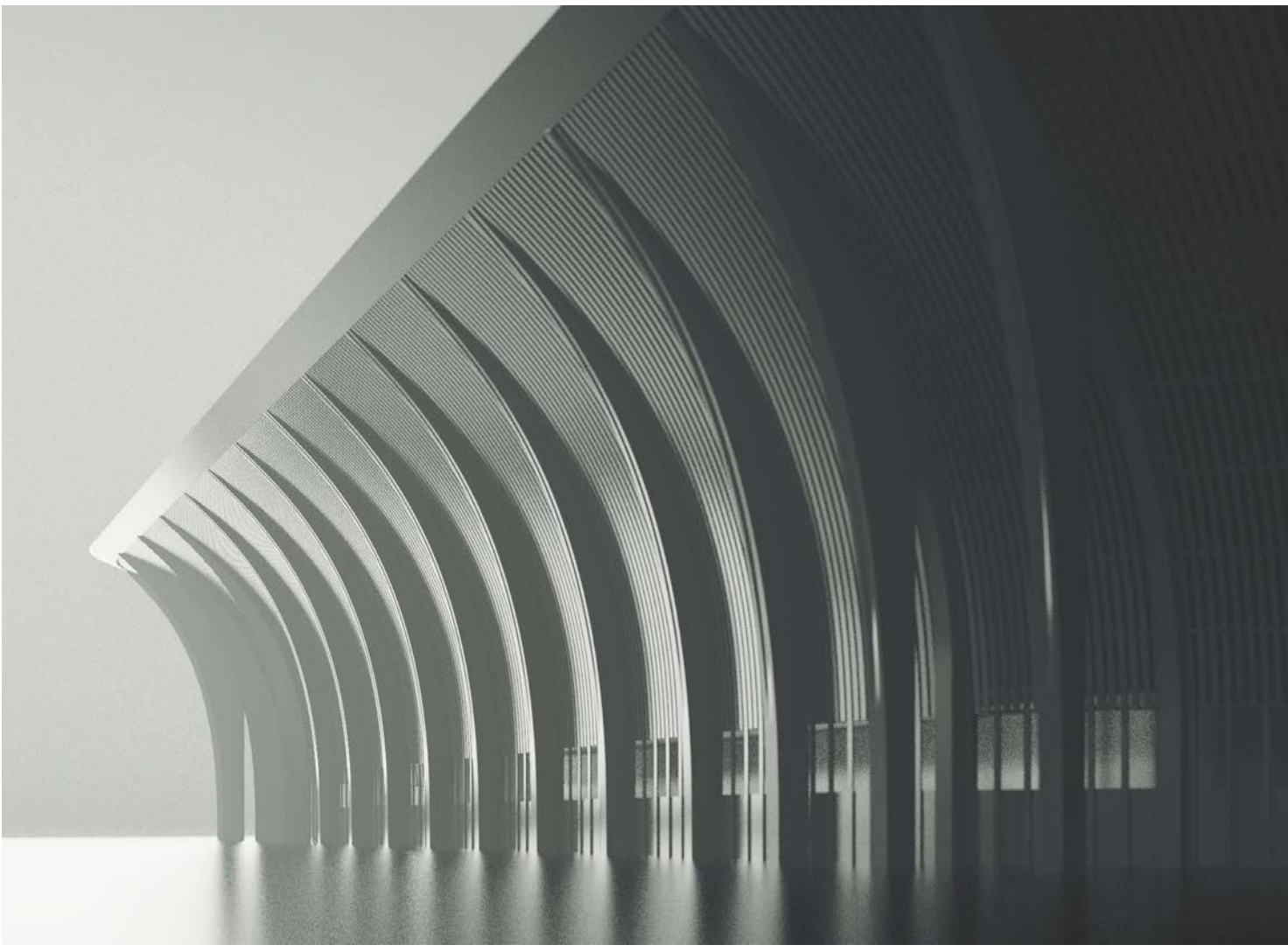


The Verticality of the Protected Forest

CONCEPT DIAGRAM



Inspired by the vertical rhythm



Intricate hierarchy of ribs offer a sense of grandeur on arrival

CONCEPT

The New Aarhus stadium is inspired by its context and club legacy, aiming to become a new catalyst for fans and the local community, a new identity for the club and a new landmark on the national and international football fraternity.

CONCEPT AND INSPIRATION: Inspired from the vertical rhythm of the 47m tall trees, the proposal sees this new stadium as an extension of the forest with the continuation of verticality in its form with colonnades and wooden ribs befitting its context. These vertical gestures flow from the forest towards the landscaped plaza, further onto the colonnade in the external and internal concourse. Together with the intricate hierarchy of ribs in the facade and roof, it subdivides the large horizontal volume into a human scale to the stadium whilst at the same time offering a sense of grandeur on arrival for the fans in the plazas all around.

SHELTER AND FLEXIBILITY: The roof design maximises weather protection and shelter to increase the comfort level around the whole stadium, in the outer circulation ring as well as at concourse level. This allows the proposal to offer a sheltered 360 degree public circulation independently from the event schedule; an added offer to the local community, the park complex users and the city of Aarhus.

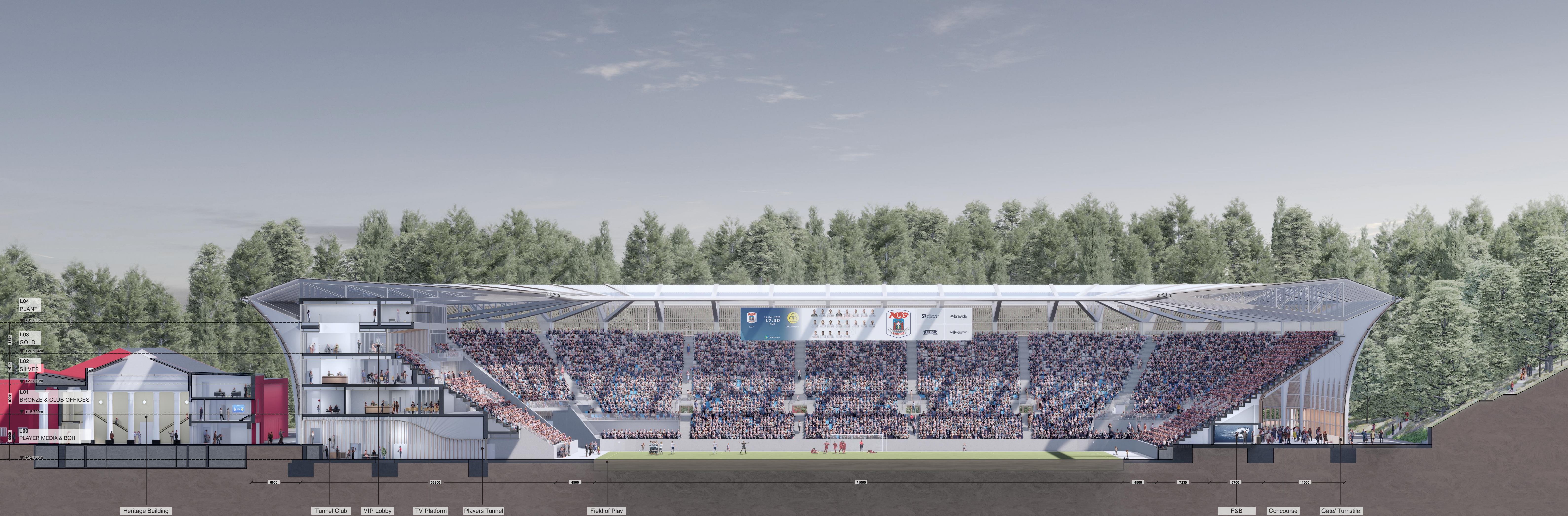
PROGRAM AND WAY FINDING: Visual identity and visual connectivity to the surroundings are paramount to the proposal. The transparent roof and gaps within the ribs, reveal glimpses of the surrounding forest and the permeable colonnades blurs the boundary between different programs.

The east and west side feature open colonnades that acts not only as an intuitive wayfinding system marking the main entrances to the stadium, but also as a permeable interface between public and stadium programs; allowing for the two to expand into one another maximising the potential offering on different event modes, day time and seasons. The proposal aims for an immediate reading of its programs, using the different quality and design features in order to have an intuitive circulation system to maximise functionality and user experience.

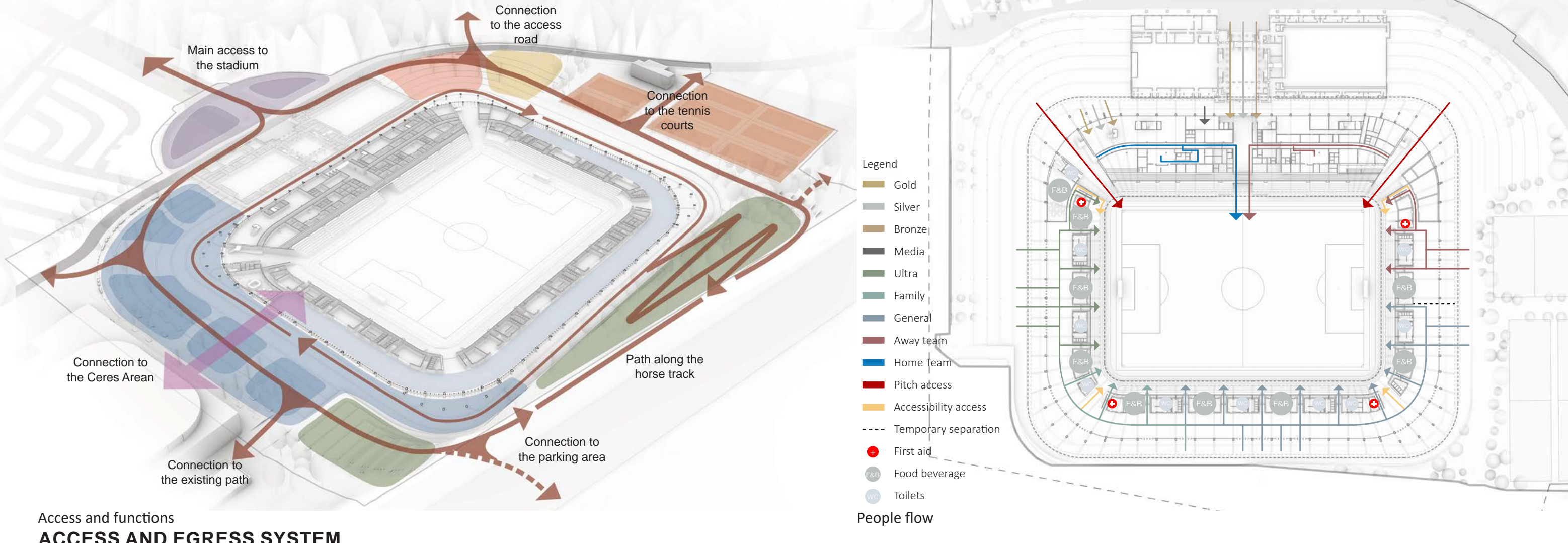
INTERIOR: The interior of the stadium is compact, following optimised sight lines and acoustic and light parameters, providing both an intimate atmosphere and enhancing the fans experience. Flexibility in use and possible expansions / capacity are all integrated into one complete solution. The aesthetics of the interior compliment the façade and the natural surroundings and vice-versa.



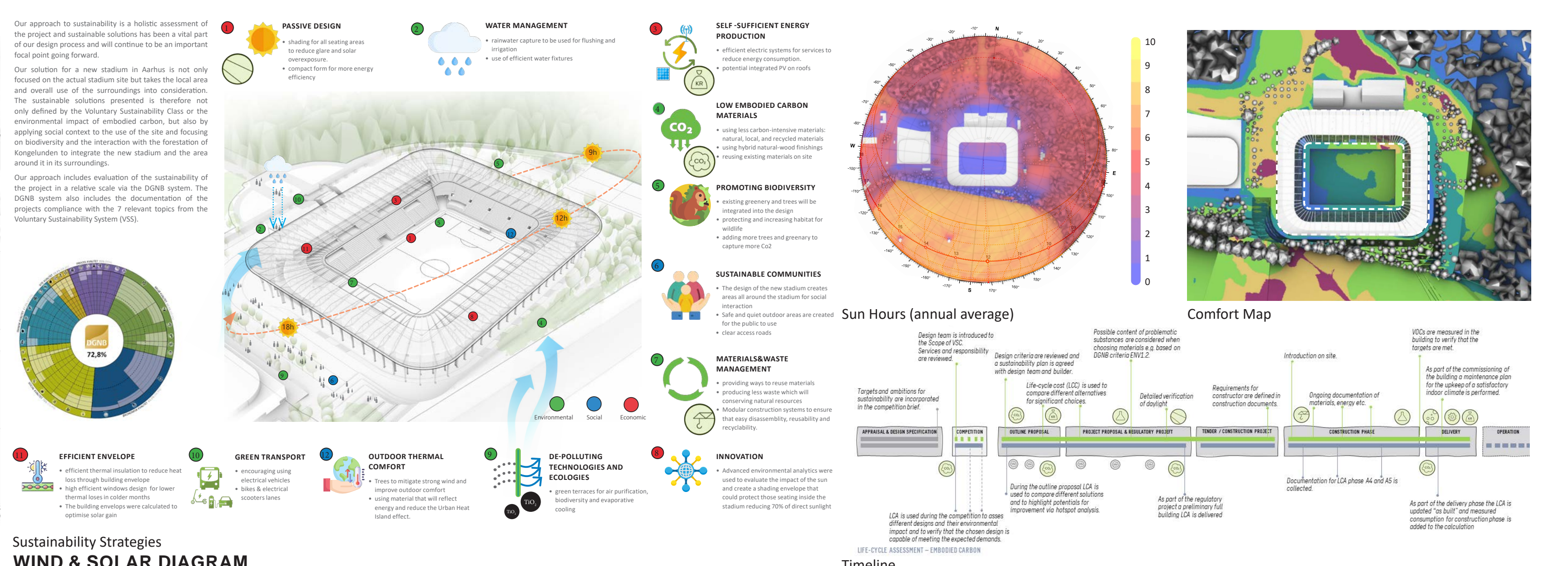
BIRD'S-EYE VIEW OF THE STADIUM AND ITS ROOF PLAN



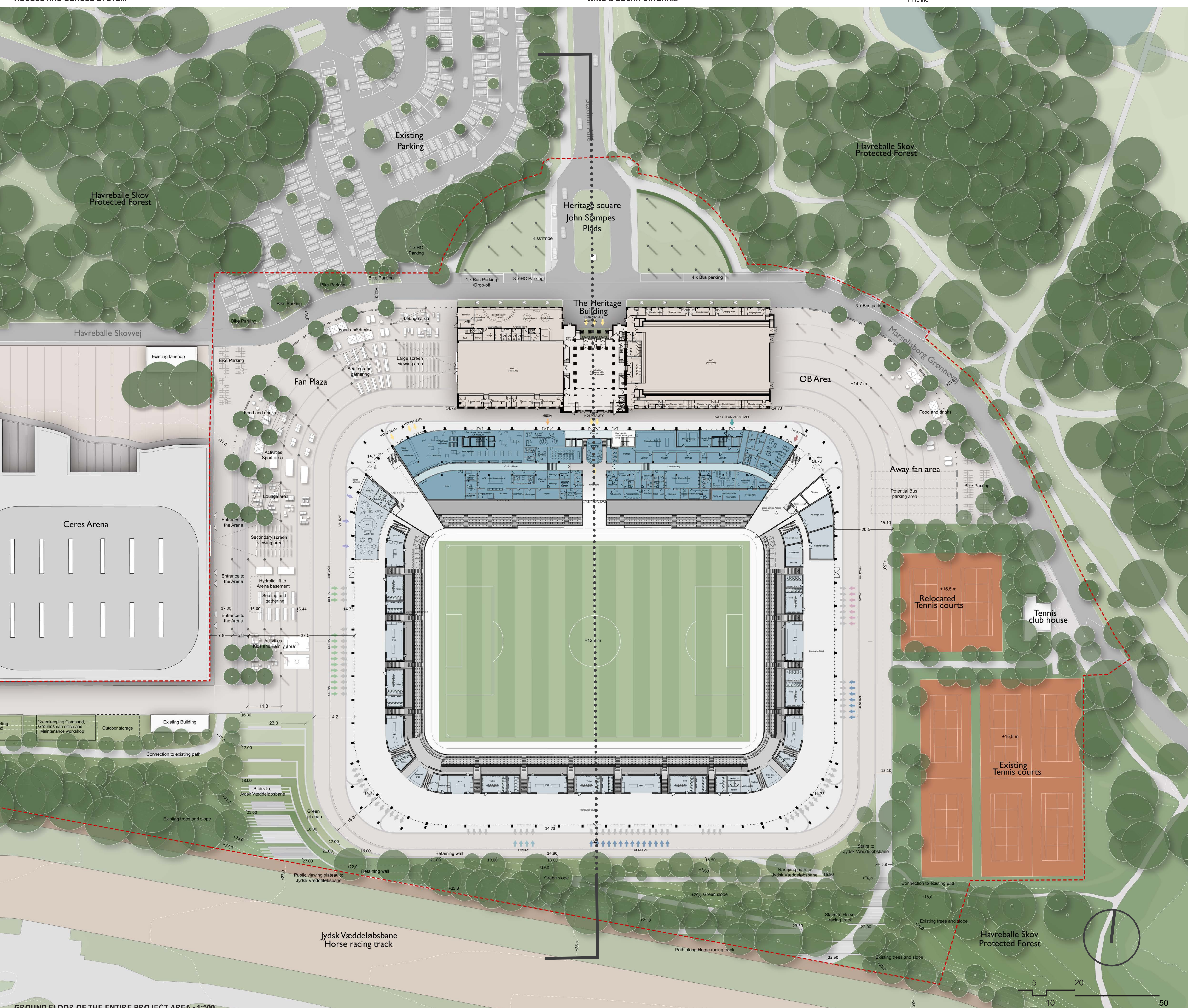
CROSS-SECTION OF THE AXIS, 1:250



Access and functions
ACCESS AND EGRESS SYSTEM



Sustainability Strategies
WIND & SOLAR DIAGRAM



GROUND FLOOR OF THE ENTIRE PROJECT AREA - 1:500

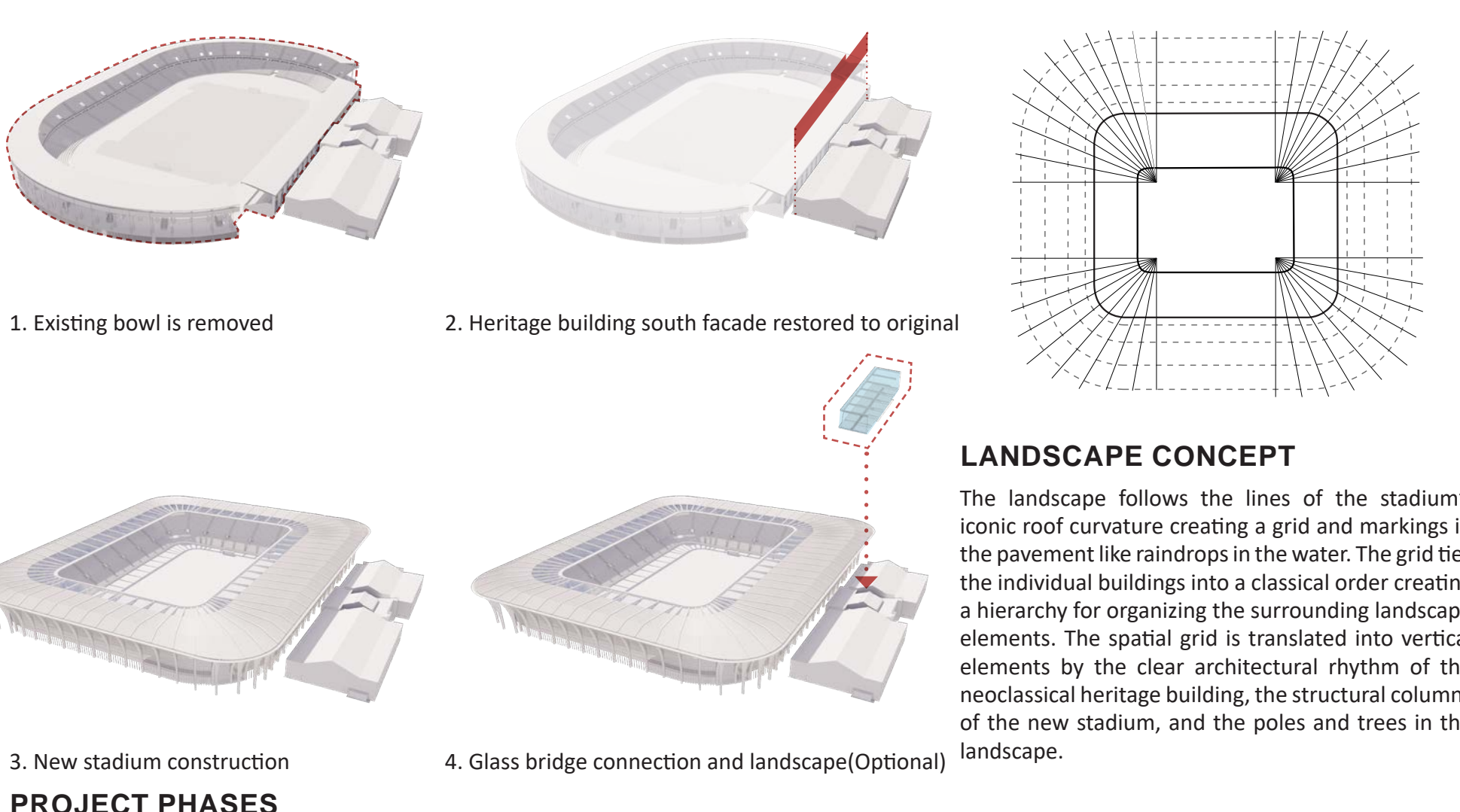
69893385



FAN PLAZA AND CONNECTION TO STADIUM



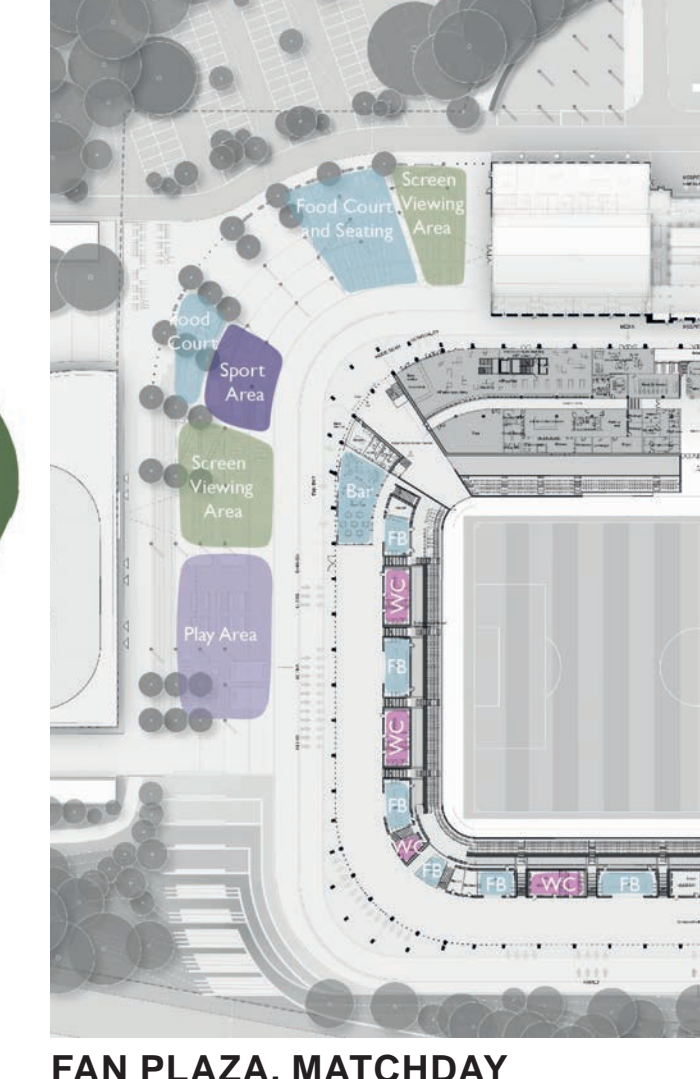
LOOKING FROM SOUTHWEST TO SOUTHEAST, SHOWING SPACE AND SCALE BETWEEN THE NEW STADIUM AND JVB



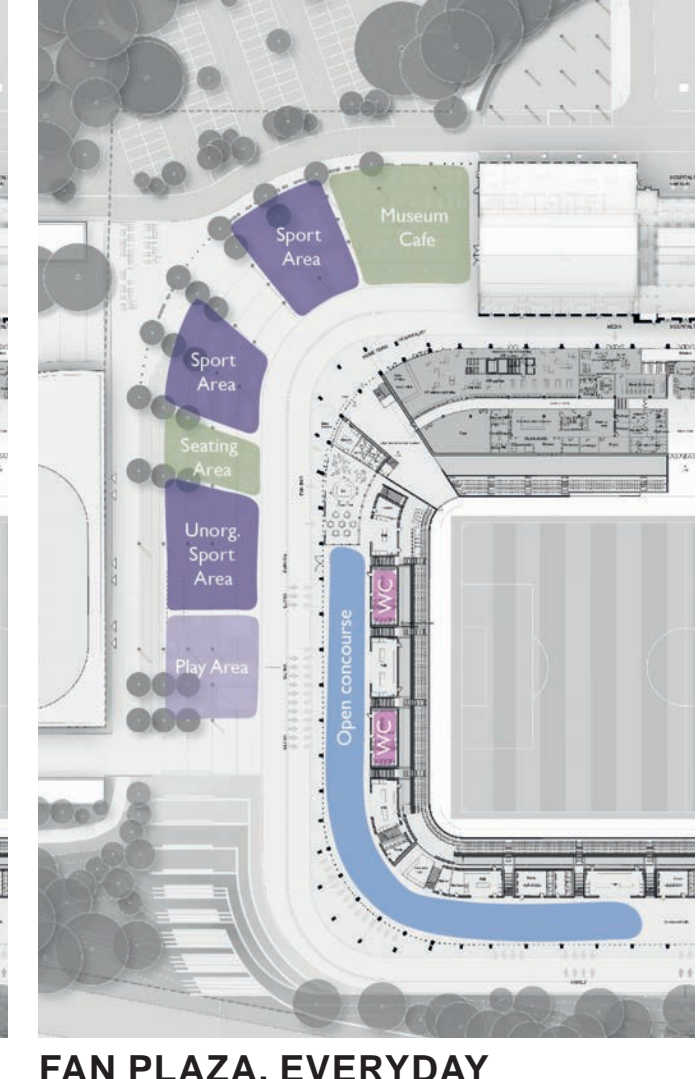
PROJECT PHASES



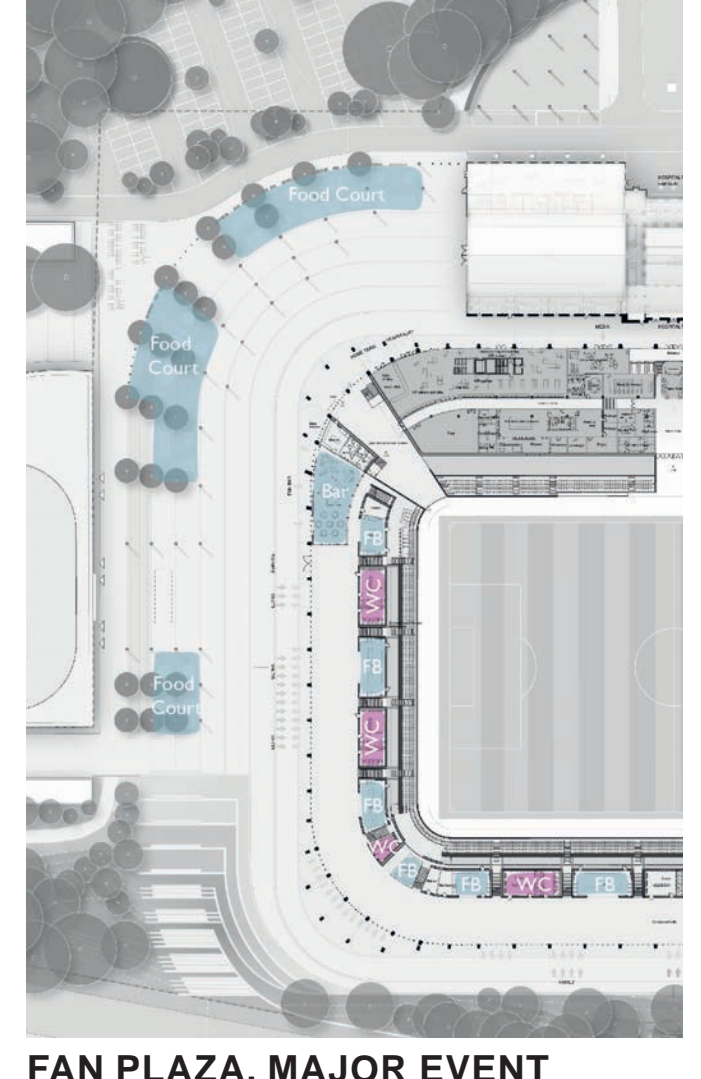
CONTEXT AND CONNECTIONS



FAN PLAZA, MATCHDAY



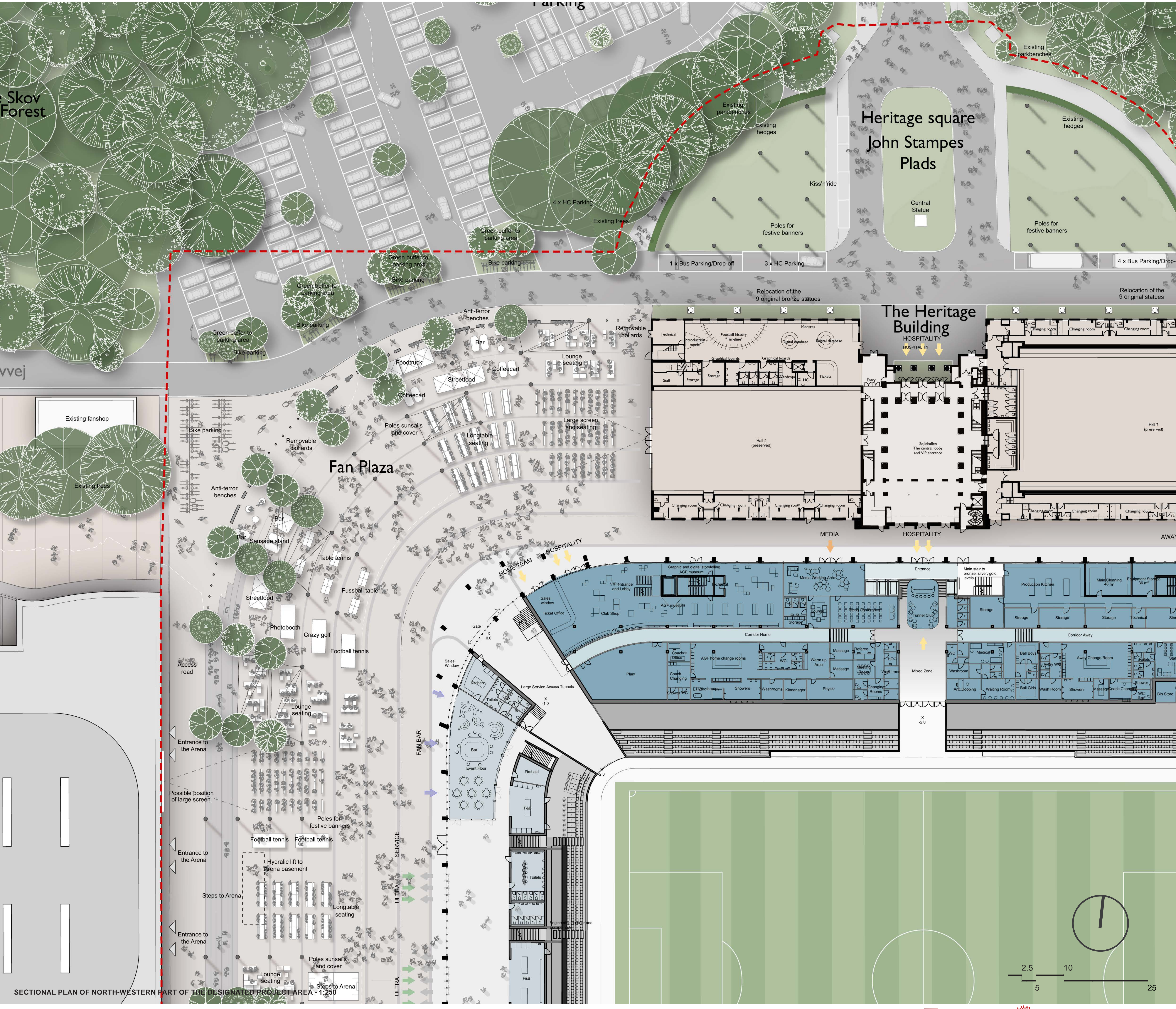
FAN PLAZA, EVERYDAY



FAN PLAZA, MAJOR EVENT



WEST PLAZA STEPS

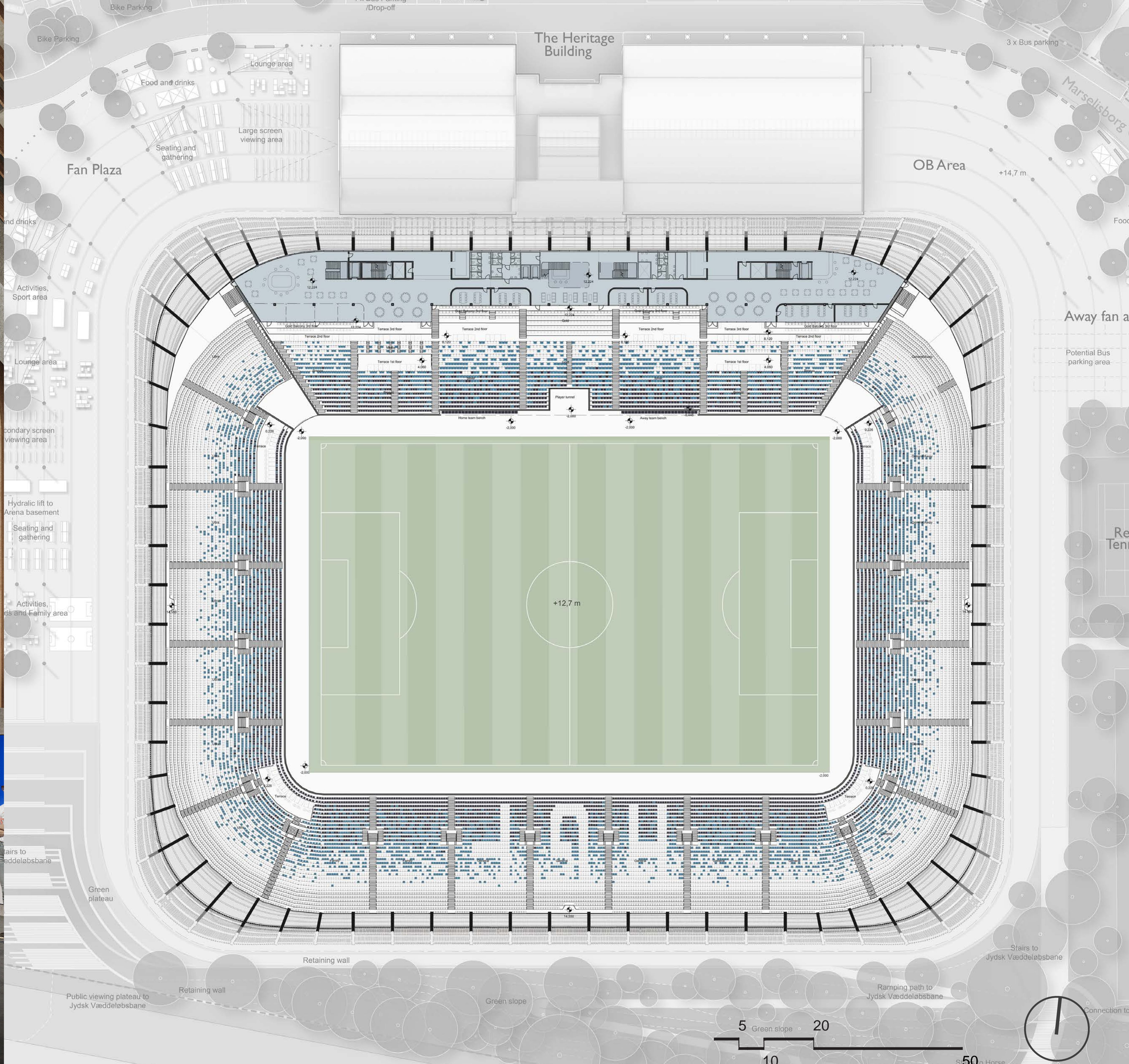


SECTIONAL PLAN OF NORTH-WESTERN PART OF THE DESIGNATED PROJECT AREA - 1:250

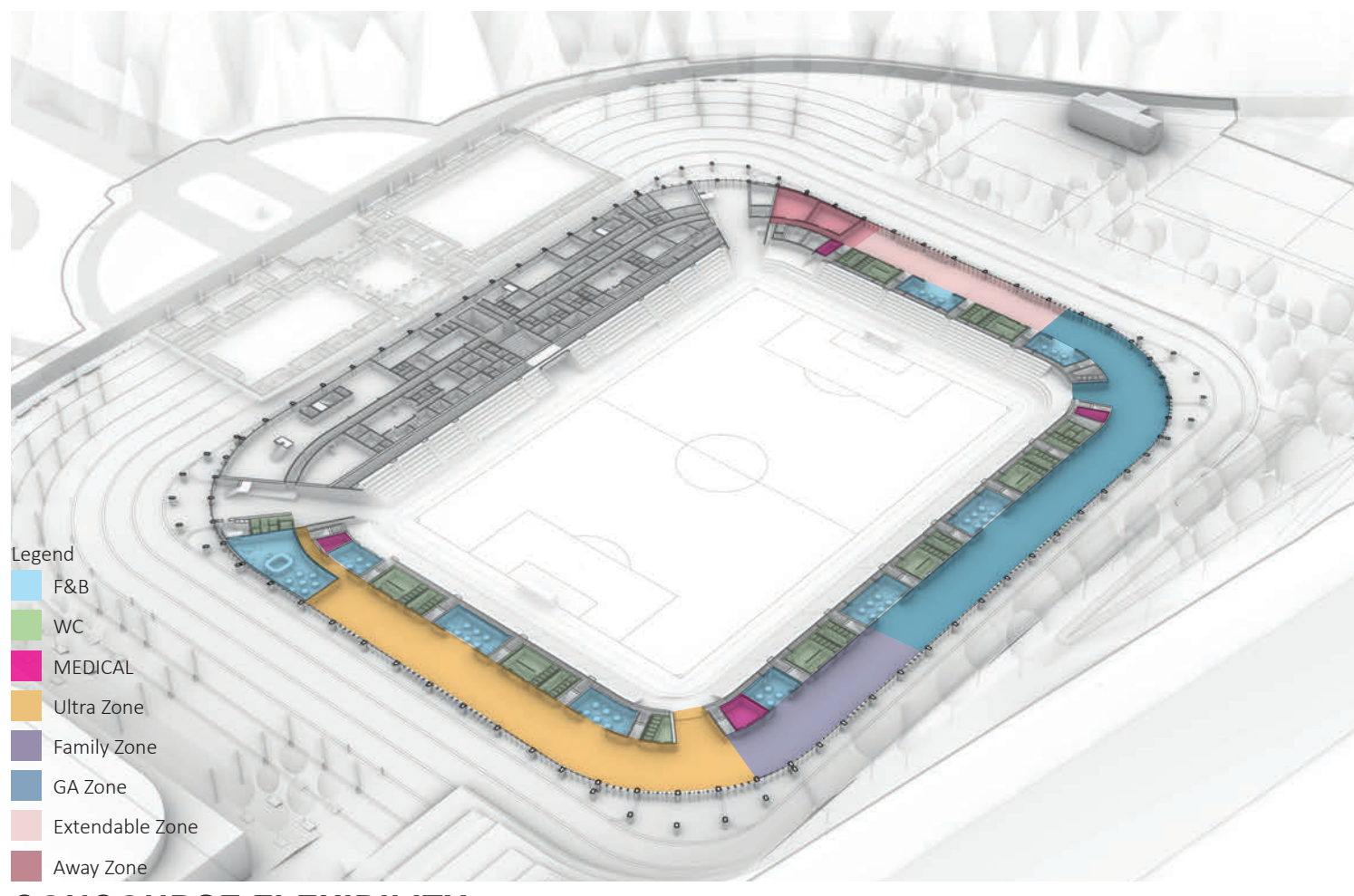
69893385



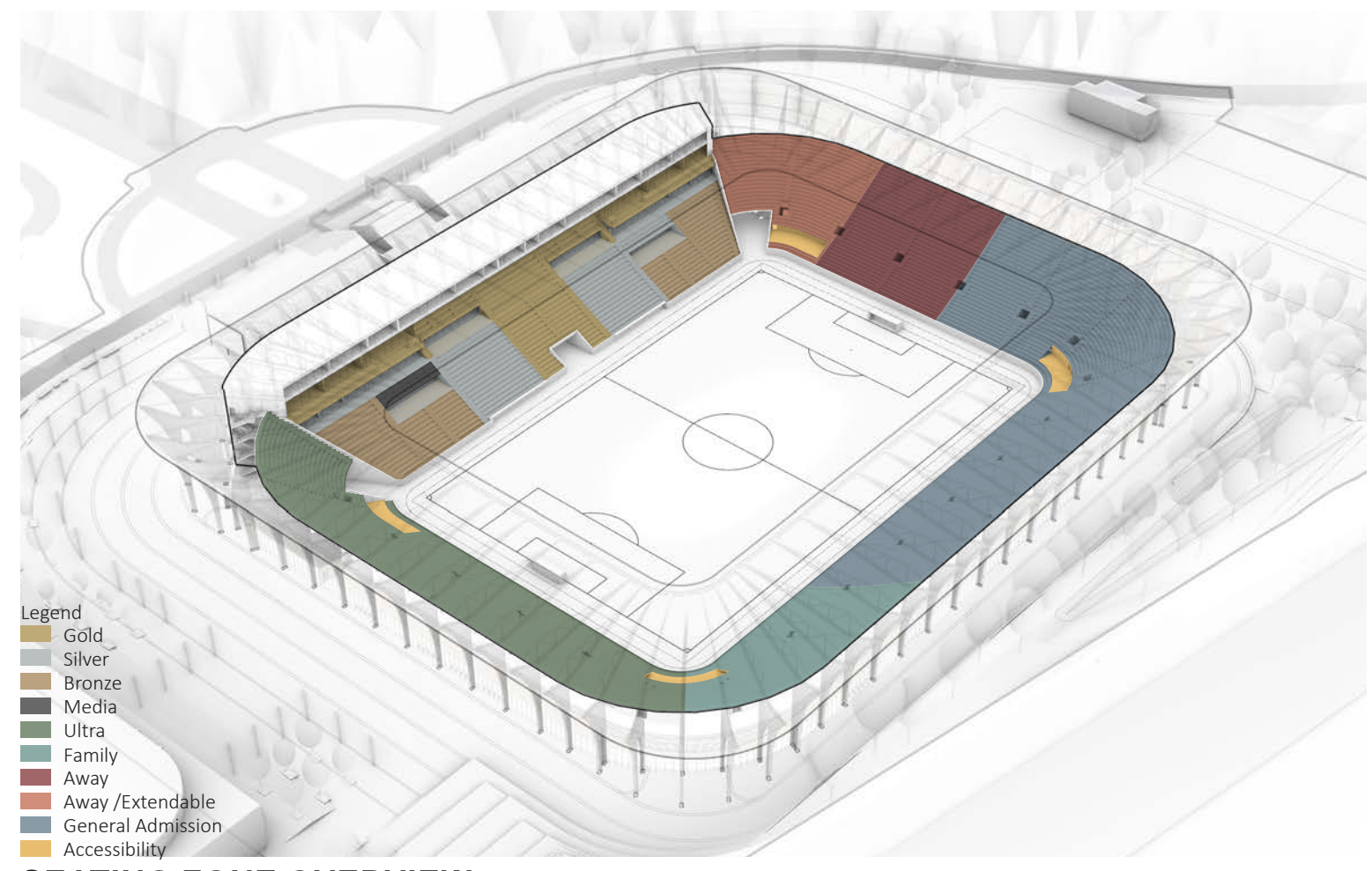
WEST CONCOURSE (ULTRA) INCL. FOOD AND BEVERAGE AREA



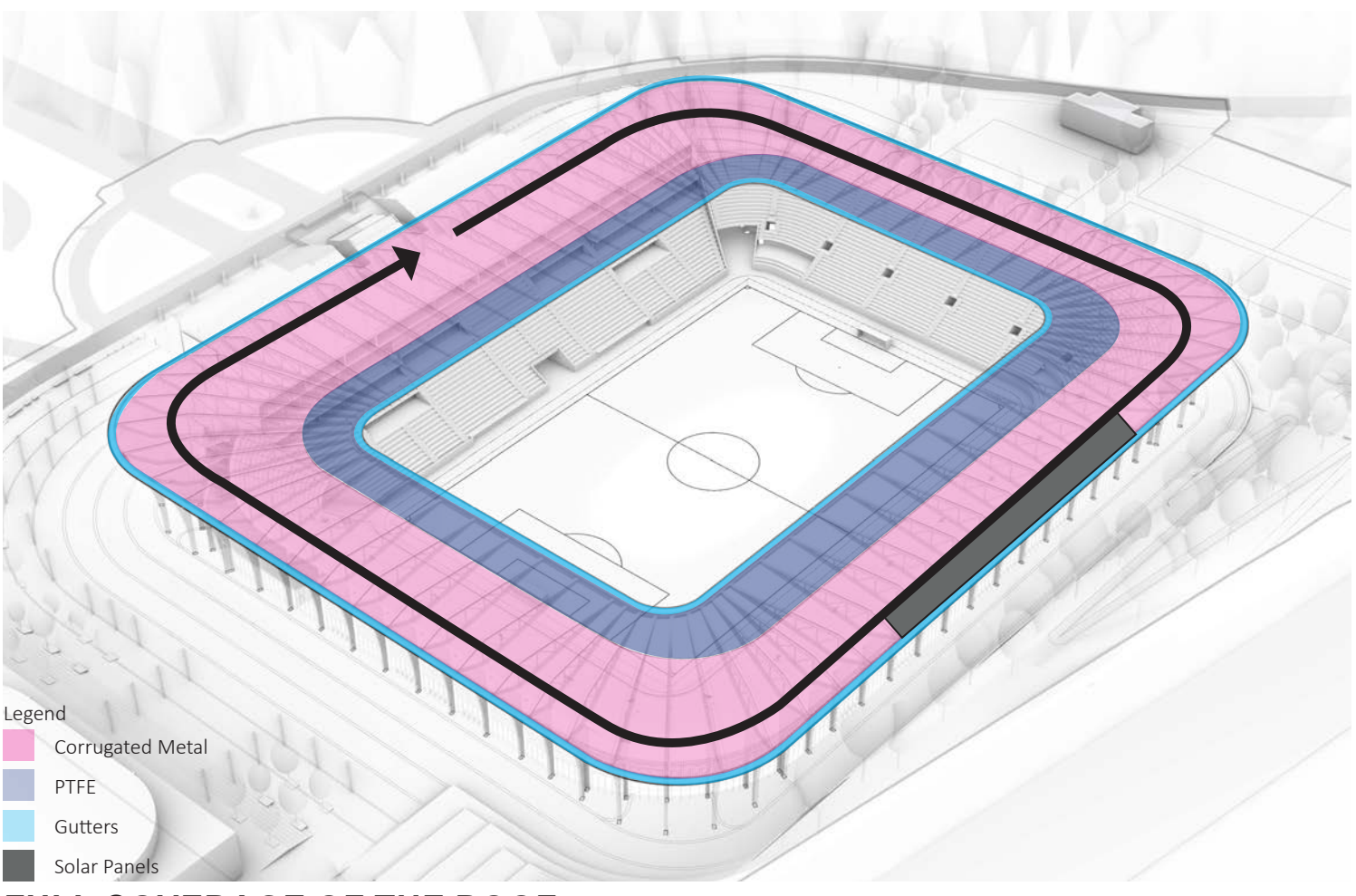
PLAN OF SEATING BOWL - 1:500



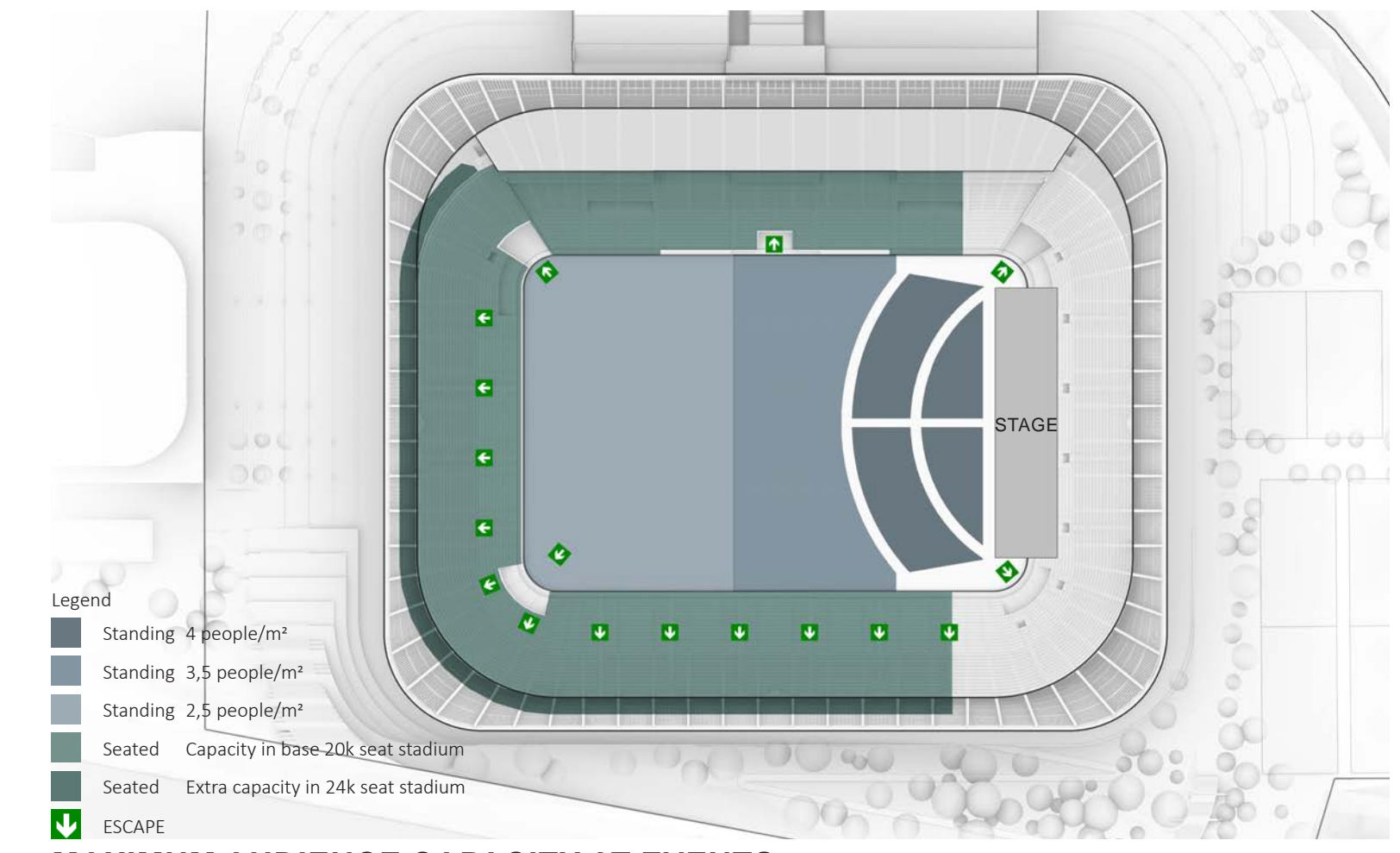
CONCOURSE FLEXIBILITY



SEATING ZONE OVERVIEW



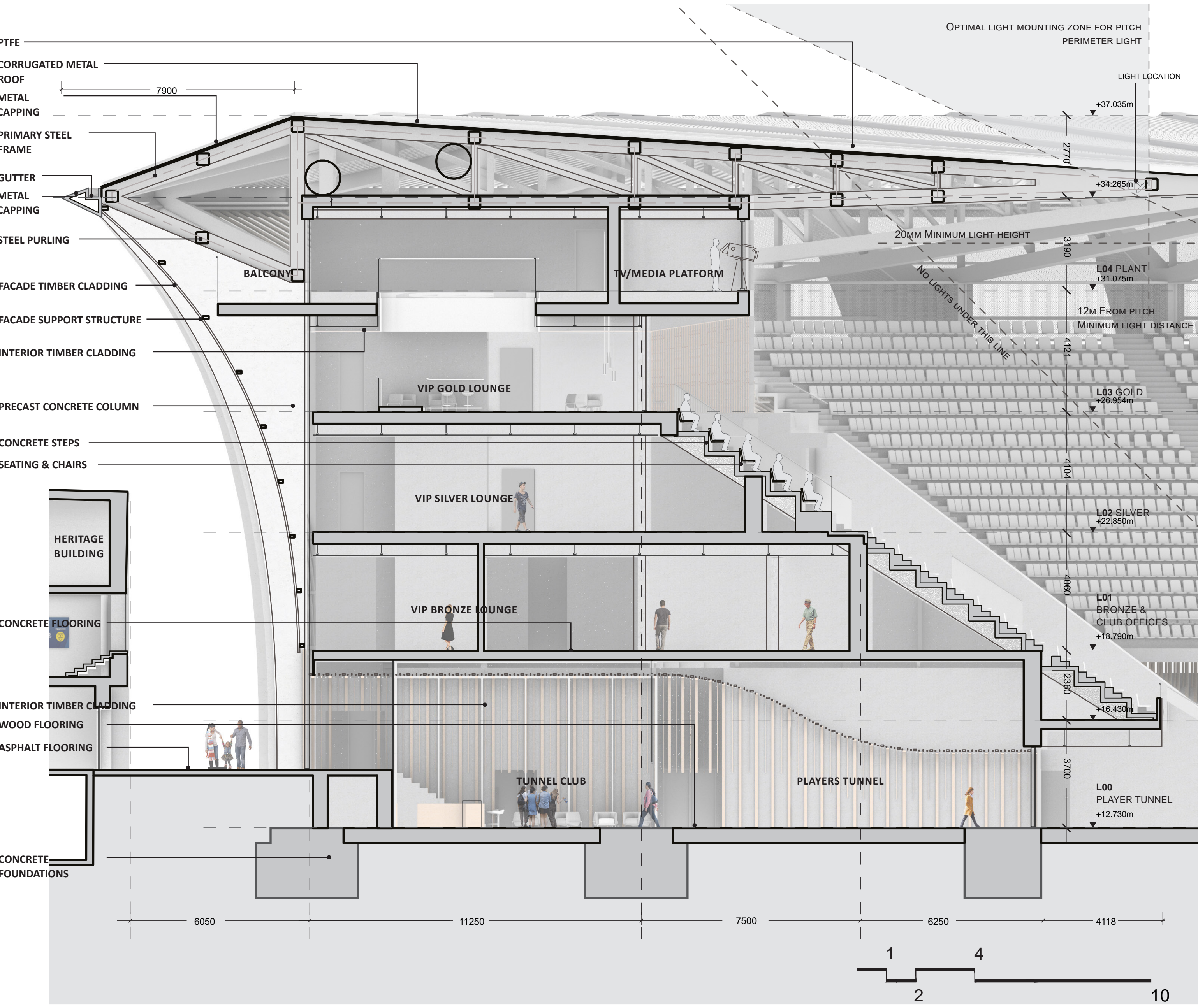
FULL COVERAGE OF THE ROOF



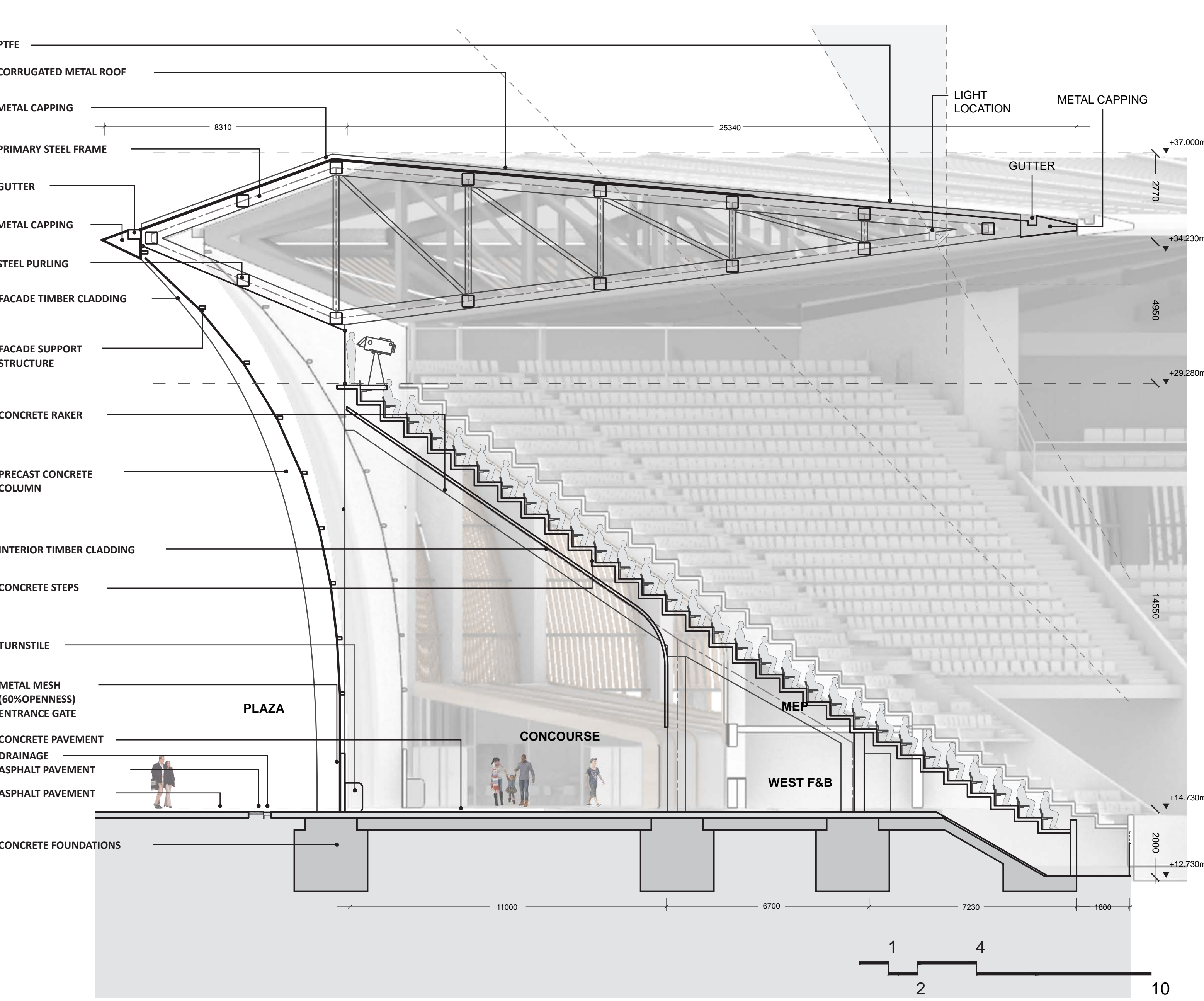
MAXIMUM AUDIENCE CAPACITY AT EVENTS



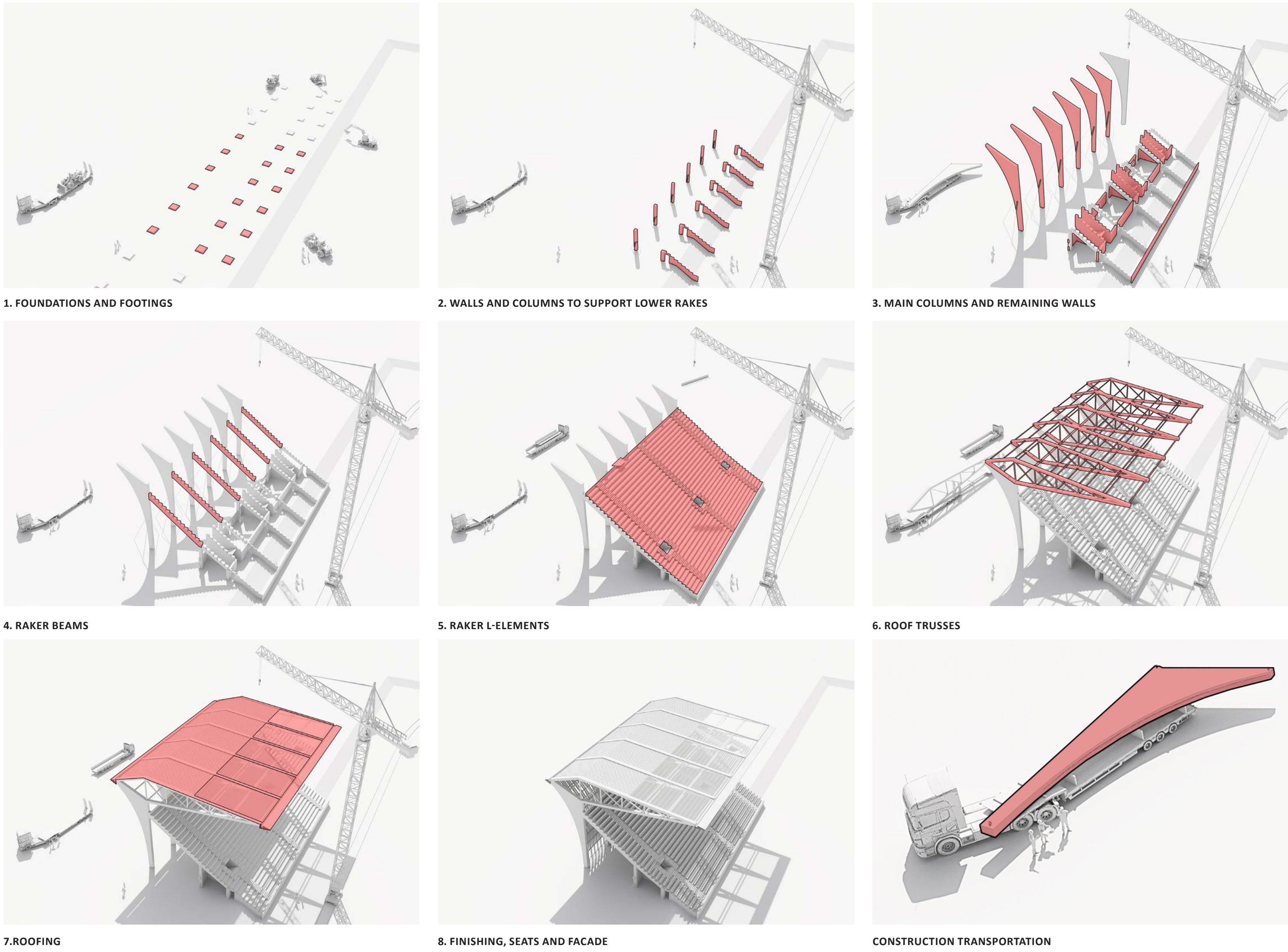
THE STADIUM EXPERIENCE



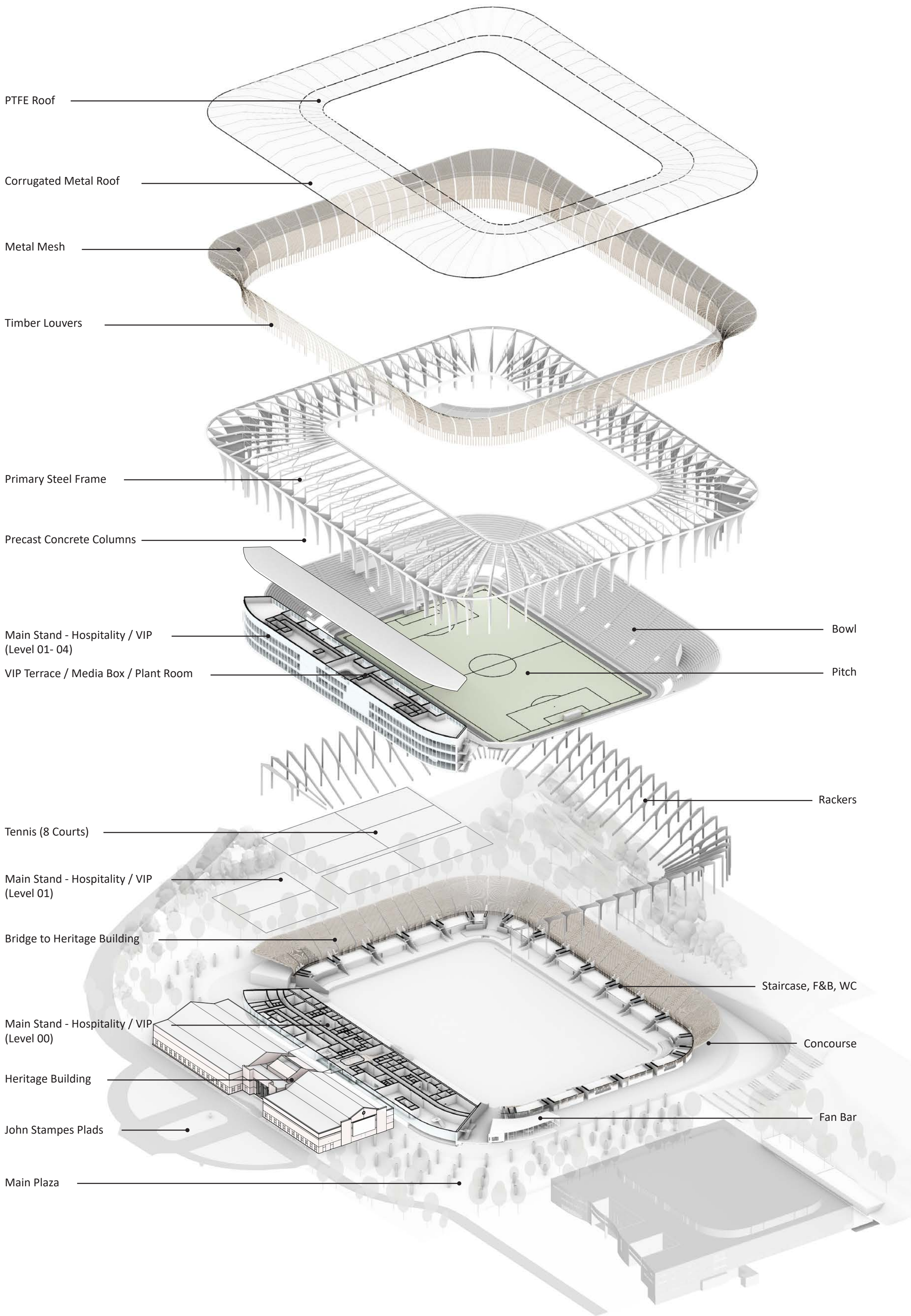
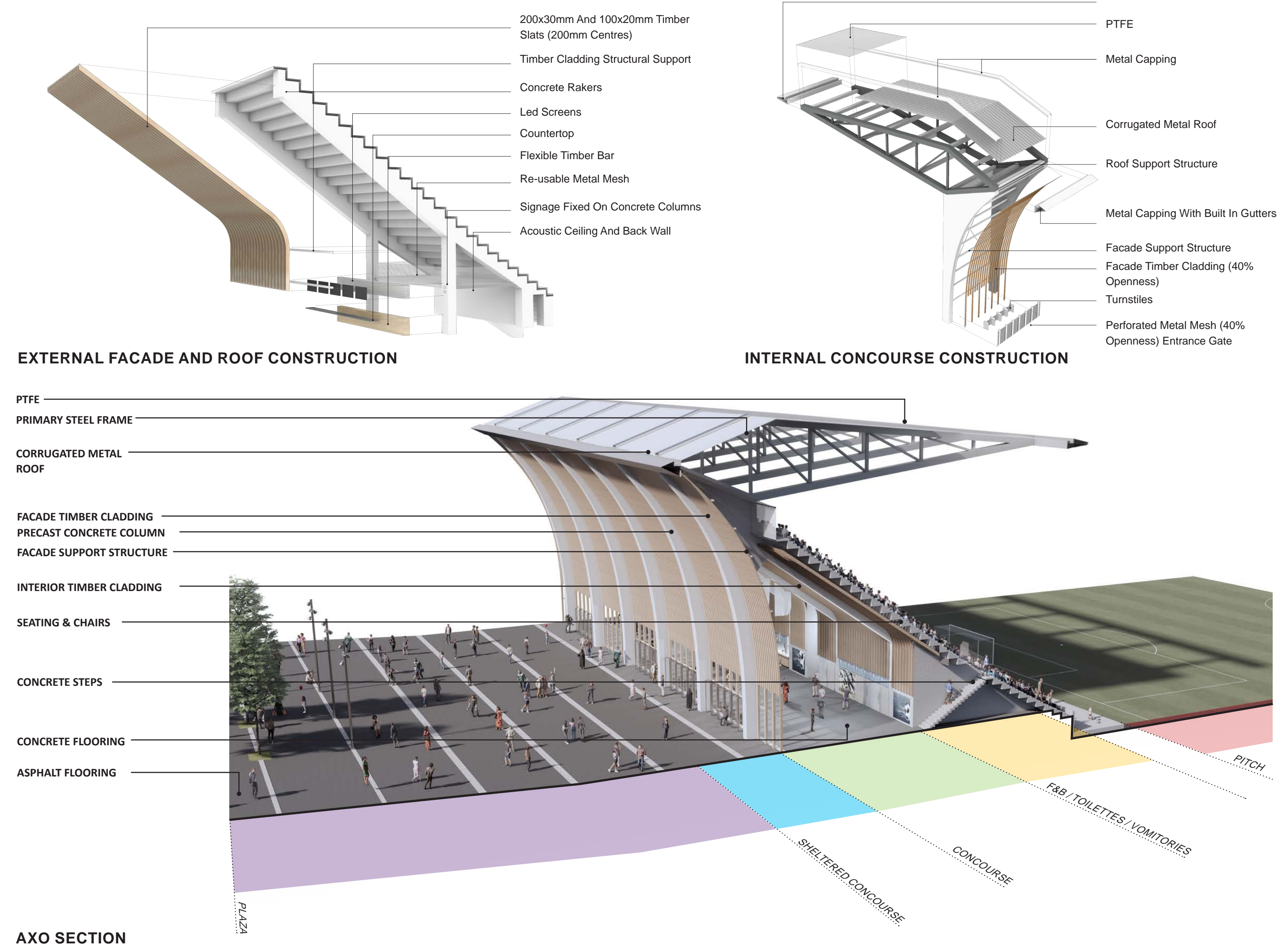
STADIUM BOWL - MAIN STAND SECTION - 1:100



SECTION THROUGH FAÇADE/CONSTRUCTION (WEST STAND) - 1:100



CONSTRUCTION SEQUENCE



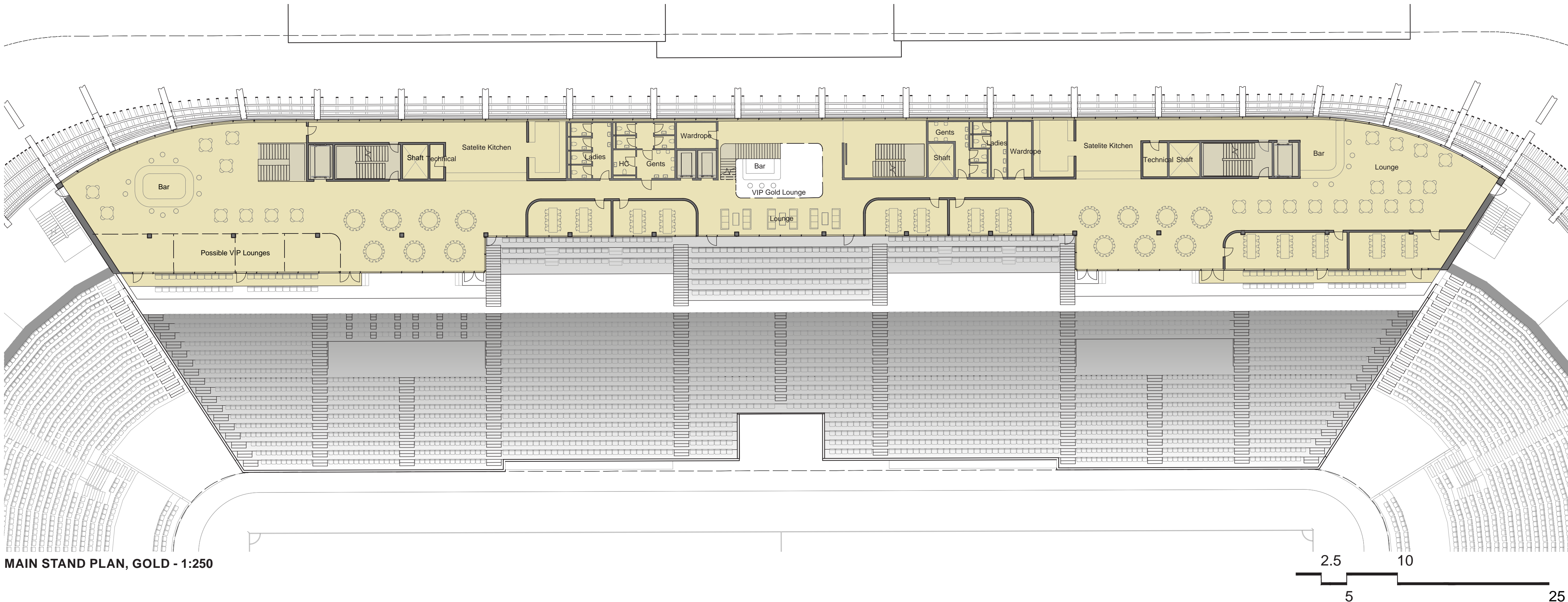
EXPLODED AXO DIAGRAM



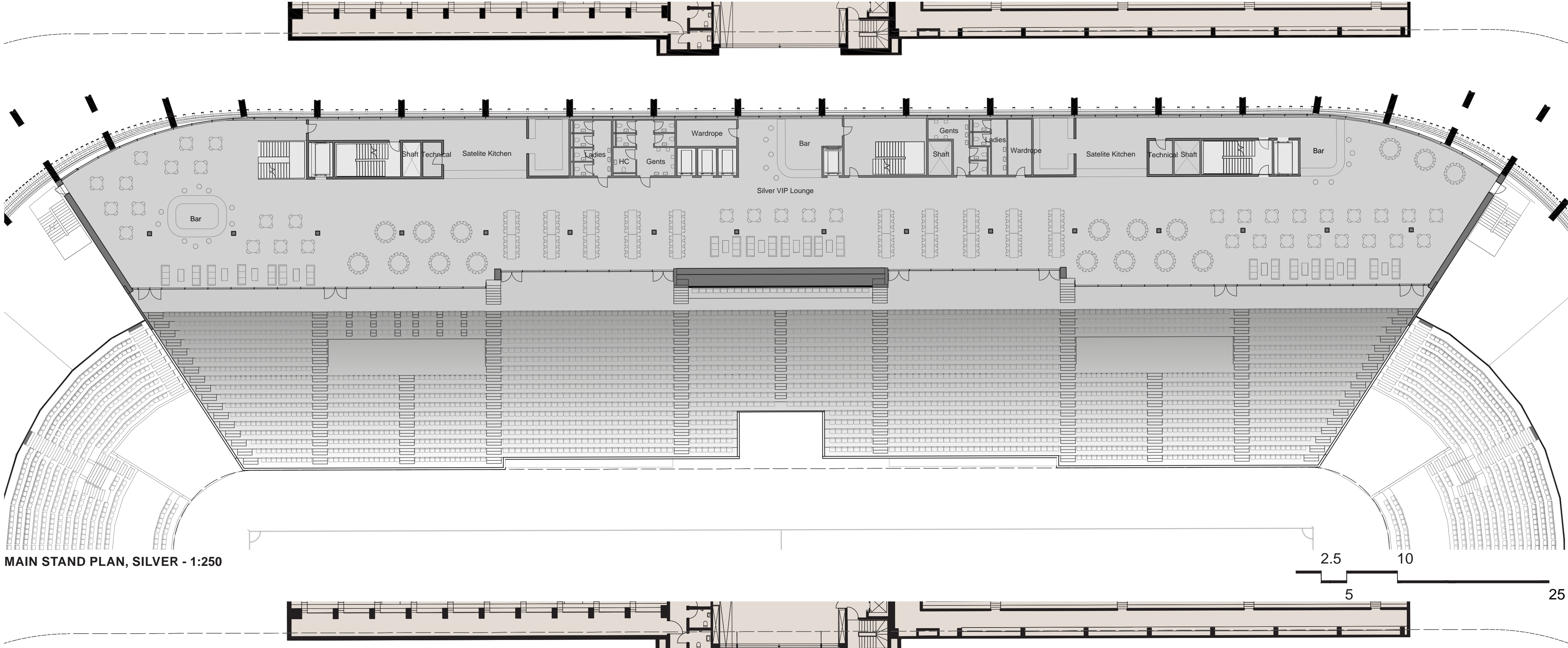
TUNNEL VIEW



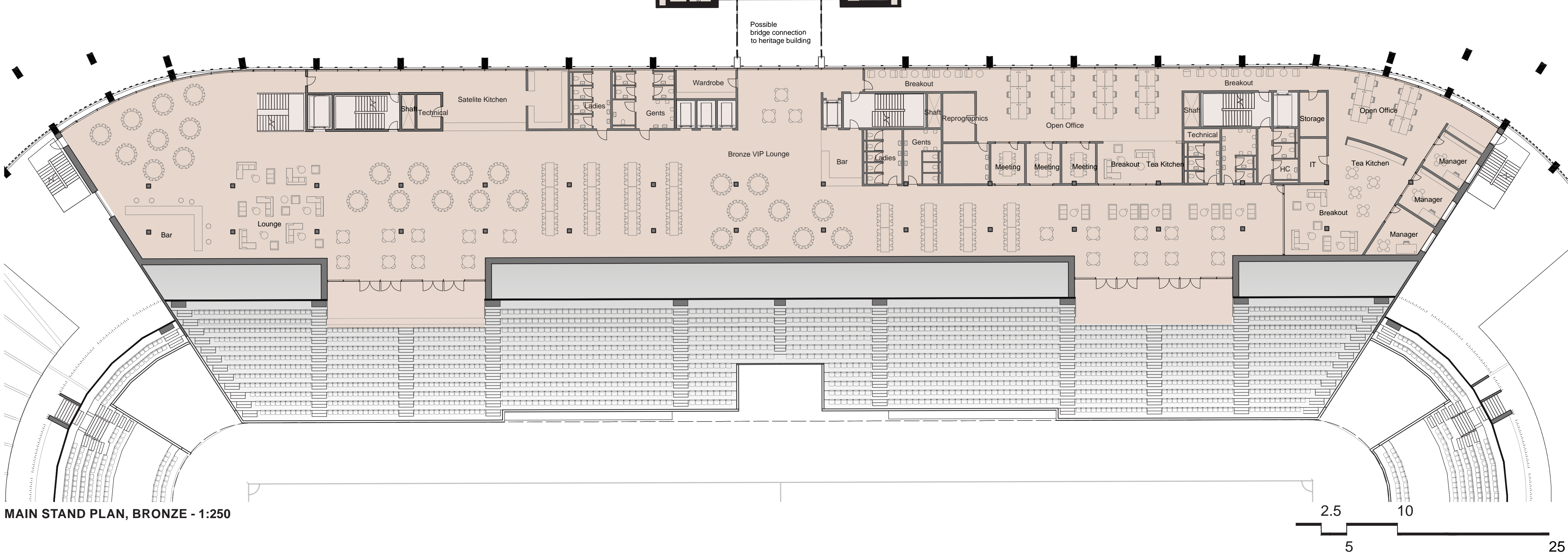
HOSPITALITY AREA - SILVER OR GOLD, INTERIOR WITH VIEW TO PITCH



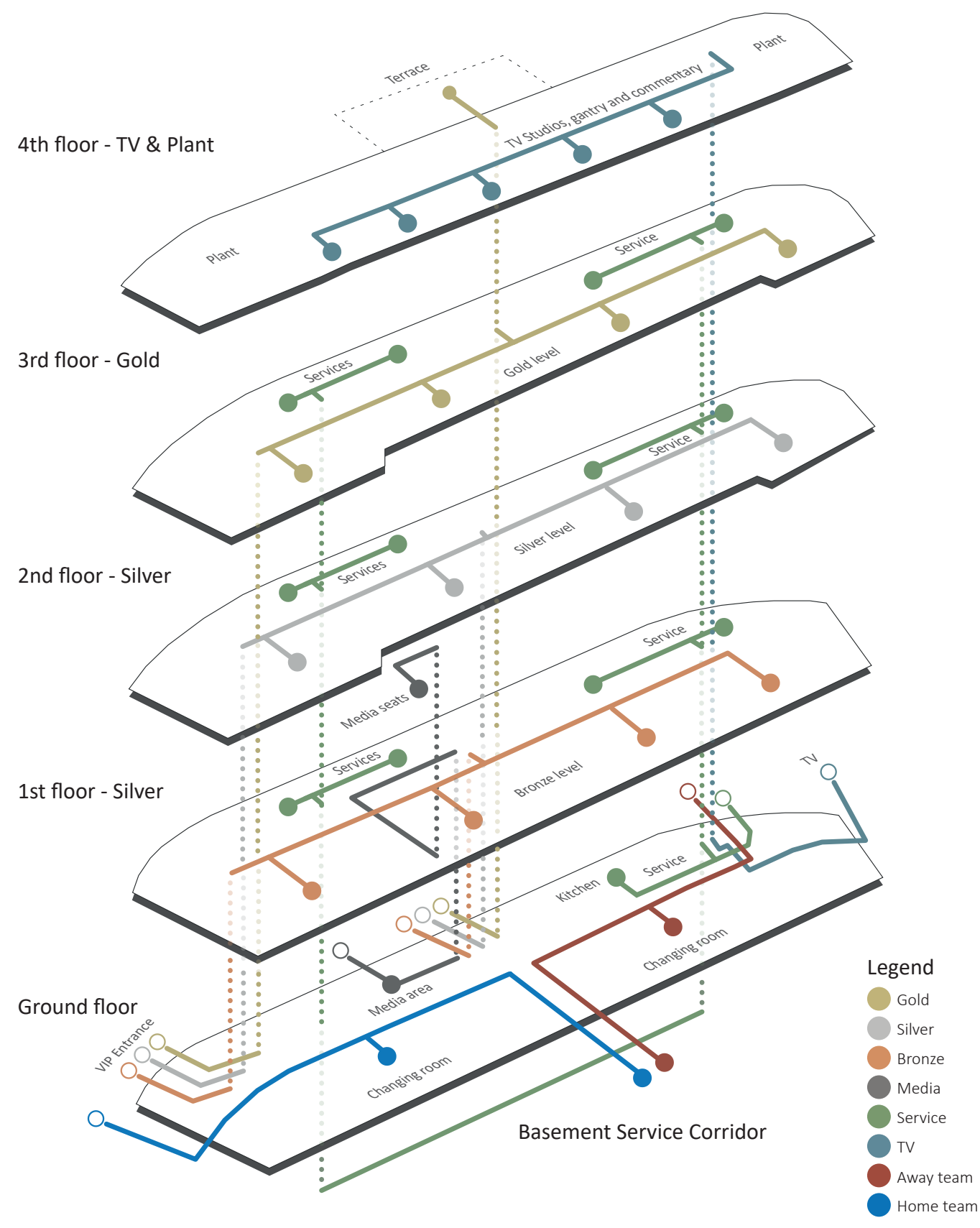
MAIN STAND PLAN, GOLD - 1:250



MAIN STAND PLAN, SILVER - 1:250



MAIN STAND PLAN, BRONZE - 1:250



VERTICAL CIRCULATION DIAGRAM - NORTH STAND

DEPARTMENT	AREA
Away Team	343 m²
Bronze	1980 m²
Catering	510 m²
Circulation and Archival	763 m²
Dining	71 m²
East Stand	1986 m²
Fan Bar	289 m²
F&M	245 m²
Gold	1834 m²
Home Team	443 m²
Media	208 m²
Medical	165 m²
Mixed Zone	109 m²
Office	635 m²
Officials	62 m²
Plant	1625 m²
Referees	12 m²
Security and Safety	150 m²
Silver	2195 m²
South Stand	2445 m²
Tunnel Club	153 m²
TV	364 m²
VIP entrance and lobby	505 m²
West Stand	1730 m²
Total	18,824 m²



4TH FLOOR



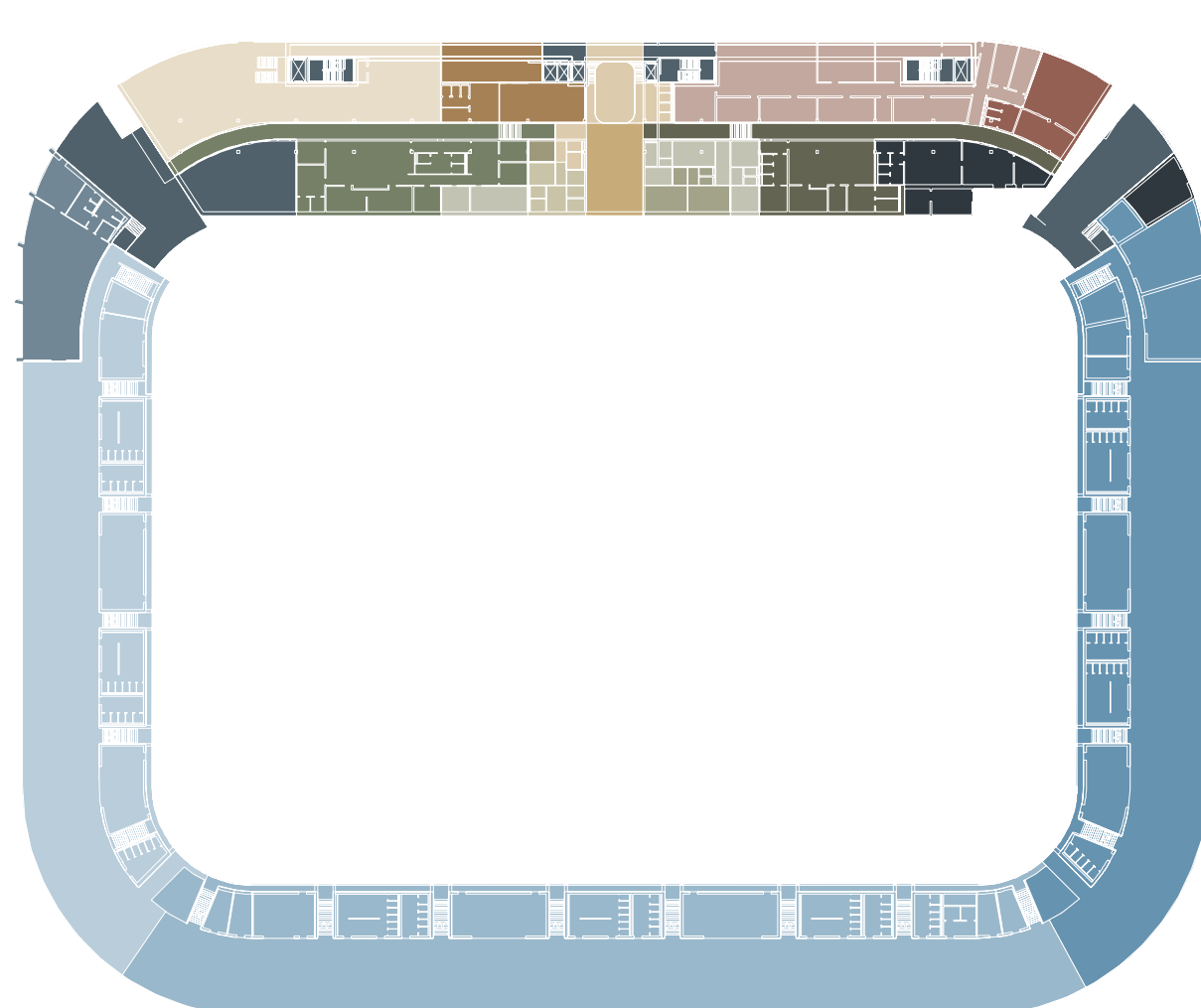
3RD FLOOR



2ND FLOOR



1ST FLOOR



GROUND FLOOR

PROGRAMME SCHEME